

## Instructions and disclaimers

### General:

The announcement and report shall be submitted via mail to ASC in **Excel** if not specified differently: [certification@asc-aqua.org](mailto:certification@asc-aqua.org)

If you would like to register a problem or issue with the document or wish to leave feedback and suggestions for improvements, please contact: [certification@asc-aqua.org](mailto:certification@asc-aqua.org)

All fields must be visible in Excel format and no field shall be omitted or deleted. ASC reserves the right to refuse to publish incomplete and low quality reports.

This document has been developed in collaboration with the [ASC Programme Assurance team](#) and [Standards & Science team](#) for ASC single-site, multi-site and group certification farm audits. A copy of all documents (Audit reports templates, confidential annexes etc.) are uploaded on to the ASC website and are publicly available.

Only fully completed forms are accepted by the ASC. Incomplete forms may lead to a delay in the certification process.

In case the audit report template for Multi-site and Group-certification does not contain enough site rows for the amount of sites applicable for a specific applicant, please contact [certification@asc-aqua.org](mailto:certification@asc-aqua.org)

### How to use this document

This document layout is formatted into tables for data entry and questions to record answers and evidence.

You can adjust the width of the columns to display all information.

Users shall **not** delete any rows or columns.

**Data filled out in the audit announcement (form 3) sheet, will be automatically populated in the audit report itself.**

**Be aware that there are 3 different types of audit report templates: 1. Single-site, 2. Multi-site and 3. Group certification.**

**Next to these 3 templates, there is the Audit Report Template V2.0 Confidential Annex, applicable to the 3 different versions of the audit report template.**

### Document type - PDF conversion - Guidance

Always save your document as a [macro-enabled](#) spreadsheet (click on "File", "Save As" and make sure the document type is saved as "Excel Macro-Enabled Workbook").

If your audit team plans to work on a shared online document - ensure the platform app supports [macro-enabled](#) functionality.

Please do not delete any rows, columns, fields or sheets (except for irrelevant species sheets). As the template is running multiple macros and formulas in the background, it is NOT possible to take out any sheets and copy paste them back in.

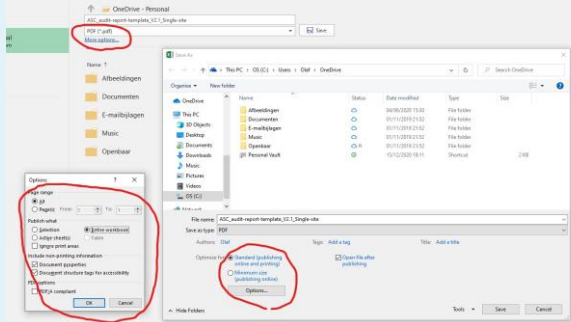
To save the full excel document as a pdf, please follow these steps:

1. Click on "File", "Save As"
2. Select PDF as document type and click on "more options"
3. Click on "options" in the box that shows up
4. Set "page range" to All and set "publish what" to Entire workbook and click on "ok"
5. Click on "Save" and the entire document will be saved as a PDF document in the correct format

#### Extra note:

The page layout is selected in a way that all tables are visible in the PDF.

Tables may appear small, however it is possible to read them by using the PDF zoom function.



### Spelling Check

How to run the excel spell check in this document?

- This can be enabled with the following key combination: Ctrl + Shift + S.
- This opens the spell-check dialogue box, cycling through all the recognised spelling mistakes.
- After the last recognised mistake is address - the dialogue closes and the worksheet is automatically locked again.
- If there are no mistakes the dialogue box does not open.
- This then needs to be repeated for each worksheet with audit data.

*(The spell check ignores capitalised abbreviations - but will still identify mix abbreviations as mistakes e.g. UoC)*

### What if changes are made?

If changes were made e.g. from the announcement to the audit report or when an updated report is submitted to ASC, ALL cells containing changes shall be highlighted in yellow for transparency reasons, and as far as possible a clear statement on the update shall be made in the respective field.

### Confidential information - Data protection and publication of reports

All fields in the announcement and audit report are mandatory and shall be filled out and will be made publicly available. However, should the client or CAB desire to submit certain data confidentially (e.g., for GDPR or commercial sensitivity reasons), this data can be entered in the **confidential annexes**, which are provided in a **separate document** than this audit report template. Please BE AWARE that confidential Annex-3 is always mandatory to be filled out and shall be submitted to the ASC, together with the audit report. Confidential annexes will NOT be made publicly available.

### Comments or guidance

For a lot of the fields in the announcement and audit report, a guidance field pops up as soon as the field is selected.

Some fields are marked with a red triangle in the corner, meaning that the field contains a guidance comment.

### Data restrictions & conditional formatting

This audit report template contains a lot of fields with data validation and data restriction fields, allowing for only a certain type of data to be filled out in the specific field (For example, date fields, picklists, numbers etc.). Please ONLY fill out the requested type of data. If not filled out correctly, an error message will pop up, giving guidance to enter the correct type of data.

The audit report template also contains a lot of fields with conditional formatting, meaning that cells or field will be highlighted, based on the type of data filled out. Some cells are highlighted with red, these will change to blue when data is entered into the cell. This makes it easier to detect fields that are not filled out, but shall be filled out. Please note that all fields are required and shall be filled out.

Link to all the sheets

[Audit Announcement \(Form3\)](#)

[1\) General, client-CAB info](#)

[2\) Audit information](#)

[3\) Site information](#)

[4\) Harvest witnessing](#)

[5\) Stakeholder engagement](#)

[6\) Social Audit](#)

[7\) Traceability risk assessment](#)

[8\) UoC volumes&Audit Closing](#)

[9\) Open & Extended NCs](#)

[10\) BEIA-PSIA checklist](#)

[Audit findings "species"](#)

Please note that all data entered in this audit announcement sheet will be automatically populated to the specific fields in the sheets of the audit report itself. SREID(s) is/are provided by ASC in the confirmation email of the publication of this Form 3.

1.1 Document Type	Audit announcement
1.2 Document language	English
1.3 Second document language	Japanese
1.4 Unit of certification type	Single Site
1.5 Company name	Asama-Chu Fisheries Cooperative Association 奥多摩湖農協
1.6 UIC Name	Aquaculture of the Asama-Chu Fisheries Cooperative Association 奥多摩湖の青森養殖
1.7 Country where UIC is located	Japan
1.8 AIC Standard	Seafood and Cobia
1.9 Standard version	5.1
1.10 Certification process is subject to GAR version	5.2
1.9 Name of the Conformity assessment body (CAB)	AMITA Corporation
Client contact person - from the UIC	
2.1 First name in the UIC	Takuro 剛
2.2 Position in the UIC (job title)	Yamamoto 山本
2.3 Email address	Production Management Section 生産管理課 hinkai@asama.or.jp
2.4 Phone number	(+81) 090-64-5155
2.5 Other means of contact e.g. Skype	

ASC standard principles covered by the audit		ASC standard principles	
2.1.1	Principle 1	Not Covered	
2.1.4	Principle 2	Not Covered	
2.1.5	Principle 3	Not Covered	
2.1.4	Principle 4	Not Covered	
2.1.5	Principle 5	Not Covered	
2.1.5	Principle 6	Not Covered	
2.1.7	Principle 7	Not Covered	
2.1.4	Principle 8	Not Covered	

Activity	Under scope of certification	Under scope of this audit	Notes
2.2.1	Sheeding	Covered	Covered
2.2.2	Nursing	Not Covered	Not Covered
2.2.3	Sheering Out	Covered	Covered
2.2.4	Transferring	Covered	Covered
2.2.5	Harvest	Covered	Covered
2.2.6	Vaccination	Covered	Covered
2.2.7	Fattening	Covered	Covered
2.2.8	Transportation	Covered	Covered
2.2.9	Storage (if present at farm)	Not Covered	Not Covered
2.2.10	Processing (if present at farm)	Not Covered	Not Covered
2.2.11	Packing (if present at farm)	Not Covered	Not Covered
2.2.12	Other (Please describe)	Not Covered	Not Covered

2.3 Certification cycle	1
2.4 Audit type	Surveillance audit
2.5 Audit number in certification cycle	1
2.6 Will harvest be witnessed during audit?	Yes

2.6.1 If harvest is NOT witnessed, please tick:

2.7 Audit conducted (On-site/Remote)

On-site

Please indicate the hours assigned to the different audit activities in the table below, separated by the hours spend on the activities by the environmental- and social auditor(s).

2.8	2.9	2.10
<b>Time assigned to audit activities</b>	<b>Social Auditor(s)</b>	<b>Environmental auditor(s)</b>
Off-site activities	16	0
On-site activities	8	0
Total man days	3	0

[illegible]

2.3	2.9	2.4	2.6	2.7	2.8	2.10	2.11	2.12	
Fish name	Ownership	Predatory culture species	Cycle duration	Latitude (N/S) EIR DDDMM'W'	Longitude (E/W) EIR DDDMM'W'	Production system*	Number of production units	First date of audit	Final date of audit
Seriola Farm of Azuma-Chi Fisheries Cooperative Association <small>(有限会社あづま漁協 ぶり養殖場)</small>	Owned	japanese amberjack ( <i>Seriola quinqueradiata</i> )	long-cycle species (>6 months)	32-25.782°N	130-20.901°E	Cages	11	21/07/2021	21/07/2021

[illegible]

# 1. General, client/CAB information

1.1 Document Type	Audit announcement
1.2 Document language	English
1.3 Second document language	Japanese
1.4 Unit of certification type	Single Site
1.4.1 Company name	Azuma-Cho Fisheries Cooperative Association 東町漁業協同組合
1.4.2 UoC name	Aquaculture area of the Azuma-Cho Fisheries Cooperative Association
1.5 Country where UoC is located	Japan
1.6 ASC Standard	Seriola and Cobia
1.7 Standard version	1.1
1.8 Certification process is subject to CAR version	2.2
1.9 Name of the Conformity assessment body (CAB)	AMITA Corporation
<b>Client contact person - from the UoC</b>	
1.15 First name	Takeshi 剛
1.16 Surname	Yamamoto 山本
1.17 Position in the UoC (Job title)	Production Management Section 生産管理課
1.18 Email address	hinkan@azuma.or.jp
1.19 Phone number	(+81) 0996-64-5155
1.20 Other means of contact e.g. Skype	0

## 2) Audit information

Date - <b>Audit announcement</b> published on ASC website	08/06/2021																
Date - <b>Draft report</b> published on ASC website	-																
Date - <b>Final report</b> submitted to ASC	05/11/2021																
Audit ID	provided by ASC with publication confirmation																
ASC standard principles covered by the audit	<table> <tr><td>Principle 1</td><td>Not Covered</td></tr> <tr><td>Principle 2</td><td>Not Covered</td></tr> <tr><td>Principle 3</td><td>Not Covered</td></tr> <tr><td>Principle 4</td><td>Not Covered</td></tr> <tr><td>Principle 5</td><td>Not Covered</td></tr> <tr><td>Principle 6</td><td>Covered</td></tr> <tr><td>Principle 7</td><td>Covered</td></tr> <tr><td>Principle 8</td><td>Not Covered</td></tr> </table>	Principle 1	Not Covered	Principle 2	Not Covered	Principle 3	Not Covered	Principle 4	Not Covered	Principle 5	Not Covered	Principle 6	Covered	Principle 7	Covered	Principle 8	Not Covered
Principle 1	Not Covered																
Principle 2	Not Covered																
Principle 3	Not Covered																
Principle 4	Not Covered																
Principle 5	Not Covered																
Principle 6	Covered																
Principle 7	Covered																
Principle 8	Not Covered																

Activities covered under the scope of the certification and under the scope of the audit.  
Activities in the table apply to final product only.

Activity	Under scope of certification	Under Scope of this audit	Notes
2.6.1 Stocking	Covered	Covered	
2.6.2 Nursing	Not Covered	Not Covered	
2.6.3 Growing Out	Covered	Covered	
2.6.4 Transferring	Covered	Covered	
2.6.5 Harvest	Covered	Covered	
2.6.6 Vaccination	Covered	Covered	
2.6.7 Fallowing	Covered	Covered	
2.6.8 Transportation	Covered	Covered	
2.6.9 Storage (if present at farm)	Not Covered	Not Covered	
2.6.10 Processing (if present at farm)	Not Covered	Not Covered	
2.6.11 Packing (if present at farm)	Not Covered	Not Covered	
2.6.12 Other (Please describe)	Not Covered	Not Covered	

Certification cycle	1
Audit type	Surveillance audit
Audit number in certification cycle	3
Will harvesting be witnessed during audit?	Yes
If harvest is NOT witnessed, please justify:	0
Audit conducted (On-site/Remote):	On-site

Please indicate the hours assigned to the different audit activities in the table below, separated by the hours spend on the activities by the environmental- and social auditor(s):

2.12.1	2.12.2	2.12.3
<b>Time assigned to audit activities</b>	<b>Social Auditor(s)</b>	<b>Environmental auditor(s)</b>
Off-site activities	16	0
On-site activities	8	0
Total man days	3	0

Audit team and other involved persons				
2.13	2.14	2.15	2.16	2.17
Surname	First name	Role	Expertise needed for the audit (required for technical experts only)	Person on-site or remote?
Ogawa 小川	Naoya 直也	Audit team leader	-	On-site
Ogawa 小川	Naoya 直也	Social Auditor	-	On-site
Tsukazaki 塚崎	Chiko 千庫	Trainee	-	On-site
0	0	0	0	0
0	0	0	0	0
0	0	0	0	0
0	0	0	0	0
0	0	0	0	0
0	0	0	0	0
0	0	0	0	0
0	0	0	0	0
0	0	0	0	0
0	0	0	0	0
0	0	0	0	0
0	0	0	0	0

3. Site information

List all sites here, that are included in the certificate.

GIS, polygon data and map on site level validated by auditor?

Yes

3.1	3.2	3.3	3.4	3.5	3.13	3.14	3.15	3.16	3.17	3.18	3.19	3.20	3.21	3.22	3.22.1	3.22.2	3.23	3.23.1	3.24	3.25	3.26	3.26.1	3.27	3.28	3.29	3.30	3.31	3.32
Site ID - provided by ASC with publication confirmation of audit announcement	Site name	Ownership	Primary culture species	Secondary species (choose multiple species as relevant)	Latitude (N, S) (00.000000)*	Longitude (E, W) (00.000000)*	Production system	Number of production units	Production type	Production method	Date of inclusion into the UoC for scope extension/group/multi-site	Start date of audit	End date of audit	First date of juvenile stocking for the current production cycle	Estimated Number of months post audit to peak biomass/ first harvest	Status at the time of the current audit	List of other certificates (choose multiple options as relevant)	List of other certificates: if 3.23 is "Other", please list the certificates:	Is the site partially certified?	If partially certified, which part is not in the UoC and why?	The volumes indicated in the fields 3.27-3.30 apply to the following full calendar year	Type of volumes indicated in 3.27-3.30	ASC-certified production volume (in Kg)	Non ASC-certified production volume (in Kg)	Dispatched or sold as ASC-certified Volume (in Kg)	Dispatched or sold as Non ASC-certified Volume (in Kg)	For Bivalve/Abalone: Volumes indicate in 3.27 - 3.30 are given in live weight equivalent or volume without shell	Note/ Other information
50000630	Seriola Farm of Azuma-Cho Fisheries Cooperative 東町漁業協同組合 プリ美 殖場	Owned	Japanese amberjack (Seriola quinqueradiata)		32.257821	130.203013	Cages		Monoculture	Intensive	18/06/2019	21/07/2021	21/07/2021	01/07/2020	0	Harvest	Other	Marine Eco-Label Japan (MEL)	Yes	Use of feed not compliant with ASC standard requirements	2020	Actual volume	91707.1	10796713.53	63052.3	10798019.33		

## 4. Harvest witnessing

4.1	4.2	4.3	4.4	4.5	4.6	4.7	4.8
Site ID - provided by ASC with publication confirmation of audit announcement.	Site name	Date of witnessed harvest:	Production unit ID:	Volume harvested (in Kg):	Average weight of animals (in g)	Partial harvest / full harvest:	Note/ Other information
S0000630	Seriola Farm of Azuma-Cho Fisheries Cooperative Association 東町漁業協同組合 ブリ養殖場	21/7/2021	Yushin Suisan 15K-1	4820.7	3000	Partial harvest	

## 5. Stakeholder engagement

ASC takes data protection very seriously. ASC will only use any personal information you give us in connection with the audit report. For more information please read our privacy policy, which can be found [here](#):

[ASC Privacy policy](#)

Provide stakeholder comments including CAB response. please use the confidential Annex-2 in case of any confidential data not to be published.

This table collects all the information relevant to stakeholders consulted during the audit process. Each stakeholder should be entered into a separate row, even where from the same company/organization

[illegible]

## 1) General, Client and CAB information

Announcement and audit report

Means of transportation between office and site(s) and between sites within UoC  
 Estimated travel time between office and site(s) and between sites within UoC  
 Number of complaints received from stakeholders over past 12 months  
**Number** of resolved complaints  
**Average time** to resolve complaints (**days**)  
 Last Social Impacts Assessment (SIA) conducted in (**year**)


Name of nearby communities, Indigenous or not and the distance of the UoC to the nearest neighbouring community/-ies or neighbours (**in km**)

Name of nearby community	Indigenous	Distance of the UoC to the nearest neighbouring community/-ies or neighbours (in km)

Social audits performed at UoC

Standard	Certified since (Date)	Certified until (Date)	Date of last audit (Date)
SA8000			
BSCI	N/A	N/A	
SMETA	N/A	N/A	
ISO 45000			
ASC			
Others (specify)			

Subcontractors

Name of subcontractors	Place of work	Areas of work/processes





## 8. UoC volumes & Audit Closing

Please indicate the correct volumes of the applicable quarter and year.

Volume reporting for complete UoC				
Quarter of the year:	Quarter 1	Quarter 2	Quarter 3	Quarter 4
8.1 The volumes indicated in this table apply to the following year:	2020	2020	2020	2020
8.1.1 Type of volumes indicated in 8.2 - 8.5	Actual volume	Actual volume	Actual volume	Actual volume
8.2 ASC-certified production volume (in Kg)	0	18518.3	73188.8	0
8.3 <b>Non</b> ASC-certified production volume (in Kg)	3012352.9	1917061.5	1614184.7	4253114.43
8.4 Dispatched or sold as ASC-certified Volume (in Kg)	0	12901.3	50151	0
8.5 Dispatched or sold as <b>non</b> ASC-certified Volume (in Kg)	3012352.9	1917144.3	1615407.7	4253114.43

Decision	
8.6 Certification decision	ASC certification for Seriola and Cobia will be continued for yellowtail farms under the jurisdiction of Azuma-cho Fisheries Cooperative Association.
8.7 Certificate valid from	18/6/2019
8.8 Certificate valid till	17/6/2022
8.9 Eligibility date	18/6/2019

Confidential Annexes	Annex filled in?	Annex submitted to ASC?
8.10 <b>Annex-1</b> Interviewee information	Yes	Yes
8.11 <b>Annex-2</b> Stakeholder comments	Yes	Yes
8.12 <b>Annex-3</b> Social information	No	No
8.13 <b>Annex-4</b> Volume data	No	No

## 9. Open & Extended NCs

Please indicate in the table below ONLY the non-conformities detected in the previous audit, which had the status: open or extended in the previous final audit report.

**This table is to evaluate the closure of the open/extended non-conformities from the previous audit. Add rows to the tables as needed.**

[illegible]

## 10. B-EIA & p-SIA checklist

Checklist and guideline for auditors on a complete B-EIA & p-SIA process and report.  
Please find all requirements for B-EIA and p-SIA in the ASC standards.

Biodiversity-inclusive Environmental Impact Assessment			
	B-EIA checklist	Validated by auditor?	Notes
10.1	1. Quality of the B-EIA process (e.g., was it participatory and transparent?). B-EIA carried out by a valid expert in accordance with requirements lined out in the ASC standards.		
10.2	(b) The B-EIA was publicly (locally) communicated with sufficient time for interested parties to participate and/or get informed.		
10.3	(c) Stakeholders are listed and impact descriptions are documented and in preparation of the final B-EIA report, meetings with the listed stakeholders (or by stakeholders chosen representatives) have taken place.		
10.4	(d) These meetings have been recorded and the minutes are attached to the final report; names and contact details of participating stakeholders included.		
10.5	(e) Evidence is provided that draft and final B-EIA reports have been submitted to local government representatives and, if requested by stakeholders, a legally registered civil organization chosen by these stakeholders.		
10.6	(f) Evidence is provided that the final B-EIA reports have been submitted and reviewed by a specialist with appropriate expertise on biodiversity issues.		
10.7	(g) B-EIA completed according to guidance on B-EIA and pSIA relationship (transparency and consultation).		
10.8	2. Risk analysis: actual (past and present) impacts of the current farms, or potential impacts of the intended farm or expansion of existing farm and at least two alternatives (one of these is the "no farm or no expansion" scenario). Concepts to cover include:		
10.9	(a) The type of farming, possible alternatives and a summary of activities likely to affect biodiversity.		
10.10	(b) An analysis of opportunities and constraints for biodiversity (include "no net biodiversity loss" or "biodiversity restoration" alternatives).		
10.11	(c) Expected biophysical changes (in soil, water, air, flora and fauna) resulting from proposed or existing activities or induced by any socioeconomic changes.		
10.12	(d) Spatial and temporal scale of influence, identifying effects on connectivity between ecosystems, and potential cumulative effects.		
10.13	(e) Available information on baseline conditions and any anticipated trends in biodiversity in the absence of the proposal.		
10.14	(f) Likely biodiversity impacts associated with the proposal or current operations in terms of composition, structure and function of surrounding ecosystems		
10.15	(g) Biodiversity services and values identified in consultation with stakeholders and anticipated magnitude, direction and timeline of changes in these (highlight any irreversible impacts).		
10.16	(h) Possible measures to avoid, minimize or compensate for significant biodiversity damage or loss, making reference to any legal requirements. Information required to support decision making and summary of important gaps.		
10.17	(i) Proposed IA methodology and timescale.		
10.18	3. Impact statement is available and contains all of the requirements listed above along with a clear indication of authors and affiliations.		
10.19	4. Review process, reviewers (decision makers), and decisions clearly documented.		
10.20	5. Clear understanding as to how options for mitigation and offsetting were determined and how avoidance actions were prioritized over compensation		
10.21	6. Names, affiliations and experience of the reviewing specialist are documented and clear understanding of how affected groups were involved and how balanced consideration was given to conservation vs. development goals in the peer review.		
10.22	7. Clear articulation of a biodiversity management system including targets and monitoring strategies for mitigation.		

Participatory Social Impact Assessment			
	p-SIA checklist	Validated by auditor?	Notes
10.23	1. Quality of the p-SIA process (e.g., is it participatory and transparent).		
10.24	(a) The intent to conduct a p-SIA is locally publicly communicated with sufficient time for interested parties to participate and/or get informed.		
10.25	(b) In listing stakeholders, in making impact descriptions, and in preparation of a final p-SIA report-document meetings with the listed stakeholders (or by stakeholders chosen representatives) have taken place.		
10.26	(c) These meetings have been minuted and these records are attached to the final report; names and contact details of participating stakeholders are included.		
10.27	(d) Evidence is provided that draft and final p-SIA reports have been submitted to a local government representative and, if stakeholders so desire, to a (by stakeholders chosen) legally registered civil organization.		
10.28	(e) B-EIA done and completed according to guidance in the ASC standards (appropriate accreditation and consultation).		
10.29	2. The risks and actual (past and present) impacts of the current or intended farm and at least two alternatives (one of these is the "no farm or no expansion" scenario). Concepts to cover include:		
10.30	(a) Economic aspects (influence on employment opportunities, influence on other livelihoods in community).		
10.31	(b) Natural resource access and use (land and water tenure, influence on quality and availability of natural resources including water).		
10.32	(c) Human assets (food security, health and safety, education, indigenous knowledge).		
10.33	(d) Physical infrastructure (access to roads, electricity, telephone, housing, waste disposal systems).		
10.34	(e) Social and cultural aspects (indigenous/traditional/customary rights and beliefs, social exclusion/inclusion, gender equity, changes in age composition of the community, local informal institutions and organizations).		
10.35	(f) Governance aspects (influence of aquaculture on norms, taboos, regulations, laws, conflict management and whether these changes add up to more or less transparency, accountability and participation in decision making).		
10.36	3. Research and report probable impacts that are likely to be most important. In doing this, it is important to arrange meetings with stakeholders to let them prioritize and to let them express how they assess/view/feel; identify both positive and negative risks and impacts.		
10.37	4. Do deeper investigations into priority impacts with a focus on the question: "What changes will lead to if they indeed come about?" These include:		
10.38	(a) Physical effects to man-made and natural structures and processes.		
10.39	(b) Likely adaptations and the social and economic effects of making such adaptations.		
10.40	(c) How these effects and indirect effects would compare to having no intervention.		
10.41	(d) How effects may or might be cumulative.		
10.42	5. Make recommendations to maximize the positive and minimize the negative, with consideration to compensation options for those lands and people impacted. Also include recommendations on how to avoid these issues with the intended farm or farm development.		
10.43	6. Propose a mitigation plan assuming the farm development will take place or continue (in an adapted form if that seems appropriate); include a "closure and reclamation plan" explaining how repair or restoration will take place after farm closure or bankruptcy		
10.44	7. Develop and approve with all stakeholders a monitoring plan and indicators on both positive and negative risks and impacts (make use of FDG and/or PRA methodologies in this step).		
10.45	8. A summary with recommendations and conclusions is made available to all involved in the process and, through local public notices, made accessible to all members of the local community.		

Adjust the column width as needed to show the whole text or provide more space to write  
Corresponds to ASC Salmon standard version 1.3

													Proposed by UoC and accepted by CAB	Proposed by UoC and accepted by CAB	Proposed by UoC and accepted by CAB				
Indicator Number	Indicator Text	Audit Evidence	Overall Indicator evaluation	Description, justification and conclusion for the evaluation decision	Date of NC detection	Deadline for NC close-out	Actual date of close-out	NC Status	VR submitted	Status of submitted VR	VR used	Q&A submitted/used	Root cause analysis	NC correction	NC Corrective action	Auditor evaluation	Extension justification	New deadline for NC close-out	Notes
1.1.1	Indicator: Presence of documents demonstrating compliance with local and national regulations and requirements on land and water use  Requirement: Yes  Applicability: All		Compliant																
1.1.2	Indicator: Presence of documents demonstrating compliance with all tax laws  Requirement: Yes  Applicability: All		Compliant																
1.1.3	Indicator: Presence of documents demonstrating compliance with all relevant nation and local labour laws and regulations  Requirement: Yes  Applicability: All		Compliant																
1.1.4	Indicator: Presence of documents demonstrating compliance with regulations and permits concerning water quality impacts  Requirement: Yes  Applicability: All		Compliant																
2.1.1	Indicator: Redox potential or (S) sulphide levels in sediment outside of the Allowable Zone of Effect (AZE) (6), following the sampling methodology outlined in Appendix I of the Salmon standard v.1.3  Requirement: Redox potential > 0 mV or Sulphide ≤ 1,500 µMol/L  Applicability: All farms except, Closed production systems that can demonstrate that they collect and responsibly dispose of > 75% of solid nutrients from the production system are exempt from standards under Criterion 2.1. See Appendix VI for requirements on transparency for 2.1.1, 2.1.2 and 2.1.3.		Compliant																
2.1.2	Indicator: Faunal index score indicating good (7) to high ecological quality in sediment outside the AZE, following the sampling methodology outlined in Appendix I of the Salmon standard v.1.3  Requirement: AZTI Marine Biotic Index (AMBI)(8) score ≤ 3.3, or Shannon-Wiener Index score > 3, or Benthic Quality Index (BQI) score ≥ 15, or Infaunal Trophic Index (ITI) score ≥ 25  Applicability: All farms except, Closed production systems that can demonstrate that they collect and responsibly dispose of > 75% of solid nutrients from the production system are exempt from standards under Criterion 2.1. See Appendix VI for requirements on transparency for 2.1.1, 2.1.2 and 2.1.3.		Compliant																
2.1.3	Indicator: Number of macrofaunal taxa in the sediment within the AZE, following the sampling methodology outlined in Appendix I of the Salmon standard v.1.3  Requirement: ≥ 2 highly abundant (9) taxa that are not pollution indicator species  Applicability: All farms except, Closed production systems that can demonstrate that they collect and responsibly dispose of > 75% of solid nutrients from the production system are exempt from standards under Criterion 2.1. See Appendix VI for requirements on transparency for 2.1.1, 2.1.2 and 2.1.3.		Compliant																
2.1.4	Indicator: Definition of a site-specific AZE based on a robust and credible (10) modelling system (11)  Requirement: Yes  Applicability: All farms except, Closed production systems that can demonstrate that they collect and responsibly dispose of > 75% of solid nutrients from the production system are exempt from standards under Criterion 2.1. See Appendix VI for requirements on transparency for 2.1.1, 2.1.2 and 2.1.3.		Compliant																
2.2.1	Indicator: Weekly average percent saturation (16) of dissolved oxygen (DO) (17) on farm, calculated following methodology in Appendix I of the Salmon standard v.1.3  Requirement: ≥ 70% (18)  Applicability: All farms. An exception to this standard shall be made for farms that can demonstrate consistency with a reference site in the same water body.		Compliant																
2.2.2	Indicator: Maximum percentage of weekly samples from 2.2.1 that fall under 2 mg/L DO  Requirement: 5%  Applicability: All		Compliant																

2.2.3	<p>Indicator: For jurisdictions that have national or regional coastal water quality targets (19), demonstration through third-party analysis that the farm is in an area recently (20) classified as having "good" or "very good" water quality (21)</p> <p>Requirement: Yes (22)</p> <p>Applicability: All farms except, Closed production systems that can demonstrate the collection and responsible disposal of &gt; 75% of solid nutrients as well as &gt; 50% of dissolved nutrients (through biofiltration, settling and/or other technologies) are exempt from standards 2.2.3 and 2.2.4.</p>		Compliant															
2.2.4	<p>Indicator: For jurisdictions without national or regional coastal water quality targets, evidence of monitoring of nitrogen and phosphorus (23) levels on farm and at a reference site, following methodology in Appendix I of the Salmon standard v.1.3</p> <p>Requirement: Consistency with reference site</p> <p>Applicability: All farms, except, Closed production systems that can demonstrate the collection and responsible disposal of &gt; 75% of solid nutrients as well as &gt; 50% of dissolved nutrients (through biofiltration, settling and/or other technologies) are exempt from standards 2.2.3 and 2.2.4.</p>		Compliant															
2.2.5	<p>Indicator: Demonstration of calculation of biochemical oxygen demand (BOD)(24) of the farm on a production cycle basis</p> <p>Requirement: Yes</p> <p>Applicability: All</p>		Compliant															
2.2.6	<p>Indicator: Appropriate controls are in place that maintains good culture and hygiene conditions on the farm which extends to all chemicals, including veterinary drugs, thereby ensuring that adverse impacts on environmental quality are minimised</p> <p>Requirement: Yes</p> <p>Applicability: All</p>		Compliant															
2.3.1	<p>Indicator: Percentage of fines (25) in the feed at point of entry to the farm (26) (calculated following methodology in Appendix I of the Salmon standard v.1.3)</p> <p>Requirement: &lt; 1% by weight of the feed</p> <p>Applicability: All farms except, To be measured every quarter or every three months. Samples that are measured shall be chosen randomly. Feed may be sampled immediately prior to delivery to farm for sites with no feed storage where it is not possible to sample on farm. Closed production systems that can demonstrate the collection and responsible disposal of &gt; 75% of solid nutrients and &gt; 50% of dissolved nutrients (through biofiltration, settling and/or other technologies) are exempt.</p>		Compliant															
2.4.1	<p>Indicator: Evidence of an assessment of the farm's potential impacts on biodiversity and nearby ecosystems that contains at a minimum the components outlined in Appendix I-3</p> <p>Requirement: Yes</p> <p>Applicability: All</p>		Compliant															
2.4.2	<p>Indicator: Allowance for the farm to be sited in a protected area (27) or High Conservation Value Areas(28) (HCVAs)</p> <p>Requirement: None (29)</p> <p>Applicability: All, The following exceptions shall be made:</p> <ul style="list-style-type: none"><li>• For protected areas classified by the International Union for the Conservation of Nature (IUCN) as Category V or VI (these are areas preserved primarily for their landscapes or for sustainable resource management).</li><li>• For HCVAs if the farm can demonstrate that its environmental impacts are compatible with the conservation objectives of the HCVA designation. The burden of proof would be placed on the farm to demonstrate that it is not negatively impacting the core reason an area has been identified as a HCVA.</li><li>• For farms located in a protected area if it was designated as such after the farm was already in operation and provided the farm can demonstrate that its environmental impacts are compatible with the conservation objectives of the protected area and it is in compliance with any relevant conditions or regulations placed on the farm as a result of the formation/designation of the protected area. The burden of proof would be placed on the farm to demonstrate that it is not negatively impacting the core reason an area has been protected.</li></ul>		Compliant															
2.5.1	<p>Indicator: Number of days in the production cycle when acoustic deterrent devices (ADDs) or acoustic harassment devices (AHDs) were used</p> <p>Requirement: 0</p> <p>Applicability: All</p>		Compliant															
2.5.2	<p>Indicator: Number of mortalities (32) of endangered or red-listed (33) marine mammals or birds on the farm</p> <p>Requirement: 0 (zero)</p> <p>Applicability: All</p>		Compliant															

2.5.3	<p>Indicator: Evidence that the following steps were taken prior to lethal action (34) against a predator:</p> <p>1. All other avenues were pursued prior to using lethal action</p> <p>2. Approval was given from a senior manager above the farm manager</p> <p>3. Explicit permission was granted to take lethal action against the specific animal from the relevant regulatory authority</p> <p>Requirement: Yes (35)</p> <p>Applicability: All, except cases where human safety is endangered. Exception to these conditions may be made for a rare situation where human safety is endangered. Should this be required, post-incident approval from a senior manager should be made and relevant authorities must be informed.</p>	Compliant																
2.5.4	<p>Indicator: Evidence that information about any lethal incidents on the farm has been made easily publicly available (36)</p> <p>Requirement: Yes</p> <p>Applicability: All</p>	Compliant																
2.5.5	<p>Indicator: Maximum number of lethal incidents (37) on the farm over the prior two years</p> <p>Requirement: &lt; 9 lethal incidents, (38) with no more than two of the incidents being marine mammals</p> <p>Applicability: All</p>	Compliant																
2.5.6	<p>Indicator: In the event of a lethal incident, evidence that an assessment of the risk of lethal incident(s) has been undertaken and demonstration of concrete steps taken by the farm to reduce the risk of future incidences</p> <p>Requirement: Yes</p> <p>Applicability: All</p>	Compliant																
3.1.1	<p>Indicator: Participation in an Area-Based Management (ABM) scheme for managing disease and resistance to treatments that includes coordination of stocking, fallowing, therapeutic treatments and information-sharing. Detailed requirements are in Appendix II of the Salmon standard v.1.3</p> <p>Requirement: Yes</p> <p>Applicability: All except farms that release no water; Farm sites for which there is no release of water that may contain pathogens into the natural (freshwater or marine) environment are exempt from the standards under Criterion 3.1.</p>	Compliant																
3.1.2	<p>Indicator: A demonstrated commitment (42) to collaborate with NGOs, academics and governments on areas of mutually agreed research to measure possible impacts on wild stocks</p> <p>Requirement: Yes</p> <p>Applicability: All except farms that release no water; Farm sites for which there is no release of water that may contain pathogens into the natural (freshwater or marine) environment are exempt from the standards under Criterion 3.1.</p>	Compliant																
3.1.3	<p>Indicator: Establishment and annual review of a maximum sea lice load for the entire ABM and for the individual farm as outlined in Appendix II of the Salmon standard v.1.3</p> <p>Requirement: Yes</p> <p>Applicability: All except farms that release no water; Farm sites for which there is no release of water that may contain pathogens into the natural (freshwater or marine) environment are exempt from the standards under Criterion 3.1.</p>	Compliant																
3.1.4	<p>Indicator: Frequent (43) on-farm testing for sea lice, with test results made easily publicly available (44) within seven days of testing</p> <p>Requirement: Yes</p> <p>Applicability: All except farms that release no water; Farm sites for which there is no release of water that may contain pathogens into the natural (freshwater or marine) environment are exempt from the standards under Criterion 3.1.</p>	Compliant																
3.1.5	<p>Indicator: In areas with wild salmonids, (45) evidence of data (46) and the farm's understanding of that data, around salmonid migration routes, migration timing and stock productivity in major waterways within 50 kilometres of the farm</p> <p>Requirement: Yes</p> <p>Applicability: All farms operating in areas with wild salmonids except farms that release no water; Farm sites for which there is no release of water that may contain pathogens into the natural (freshwater or marine) environment are exempt from the standards under Criterion 3.1.</p>	Compliant																
3.1.6	<p>Indicator: In areas of wild salmonids, monitoring of sea lice levels on wild out-migrating salmon juveniles or on coastal sea trout or Arctic char, with results made publicly available. See requirements in Appendix III of the Salmon standard v.1.3</p> <p>Requirement: Yes</p> <p>Applicability: All farms operating in areas with wild salmonids except farms that release no water; Farm sites for which there is no release of water that may contain pathogens into the natural (freshwater or marine) environment are exempt from the standards under Criterion 3.1.</p>	Compliant																

3.1.7	<p>Indicator: In areas of wild salmonids, maximum on-farm lice levels during sensitive periods for wild fish (47). See detailed requirements in Appendix II of the Salmon standard v.1.3</p> <p>Requirement: 0.1 mature female lice per farmed fish</p> <p>Applicability: All farms operating in areas with wild salmonids except farms that release no water; Farm sites for which there is no release of water that may contain pathogens into the natural (freshwater or marine) environment are exempt from the standards under Criterion 3.1.</p>		Compliant														
3.2.1	<p>Indicator: If a non-native species is being produced, demonstration that the species was widely commercially produced in the area by the date of publication of the ASC Salmon standard</p> <p>Requirement: Yes (49)</p> <p>Applicability: All farms. Exceptions shall be made for production systems that use 100 percent sterile fish or systems that demonstrate separation from the wild by effective physical barriers that are in place and well-maintained to ensure no escapes of reared specimens or biological material that might survive and subsequently reproduce.</p>		Compliant														
3.2.2	<p>Indicator: If a non-native species is being produced, evidence of scientific research (50) completed within the past five years that investigates the risk of establishment of the species within the farm's jurisdiction and these results submitted to ASC for review (51)</p> <p>Requirement: Yes (52)</p> <p>Applicability: All</p>		Compliant														
3.2.3	<p>Indicator: Use of non-native species for sea lice control for on-farm management purposes</p> <p>Requirement: None</p> <p>Applicability: All</p>		Compliant														
3.3	<p>Indicator: Use of transgenic (54) salmon by the farm</p> <p>Requirement: None</p> <p>Applicability: All</p>		Compliant														
3.4.1	<p>Indicator: Maximum number of escapes (57) in the most recent production cycle</p> <p>Requirement: 300 (58)</p> <p>Applicability: All farm. A rare exception to this standard may be made for an escape event that is clearly documented as being outside the farm's control. Only one such exceptional episode is allowed in a 10-year period for the purposes of this standard. The 10-year period starts at the beginning of the production cycle for which the farm is applying for certification. The farmer must demonstrate that there was no reasonable way to predict the events that caused the episode. See auditing guidance for additional details.</p>		Compliant														
3.4.2	<p>Indicator: Accuracy (59) of the counting technology or counting method used for calculating stocking and harvest numbers</p> <p>Requirement: ≥ 98%</p> <p>Applicability: All</p>		Compliant														
3.4.3	<p>Indicator: Estimated unexplained loss (60) of farmed salmon is made publicly available</p> <p>Requirement: Yes</p> <p>Applicability: All</p>		Compliant														
3.4.4	<p>Indicator: Evidence of escape prevention planning and related employee training, including: net strength testing; appropriate net mesh size; net traceability; system robustness; predator management; record keeping and reporting of risk events (e.g., holes, infrastructure issues, handling errors, reporting and follow up of escape events); and worker training on escape prevention and counting technologies</p> <p>Requirement: Yes</p> <p>Applicability: All</p>		Compliant														
4.1.1	<p>Indicator: Evidence of traceability, demonstrated by the feed producer, of feed ingredients that make up more than 1% of the feed (63)</p> <p>Requirement: Yes</p> <p>Applicability: All</p>		Compliant														
4.2.1	<p>Indicator: Fishmeal Forage Fish Dependency Ratio (FFDRm) for grow-out (calculated using formulas in Appendix IV of the Salmon standard v.1.3)</p> <p>Requirement: &lt; 1.2</p> <p>Applicability: All</p>		Compliant														



4.2.2	<p>Indicator: Fish Oil Forage Fish Dependency Ratio (FFDRs) for grow-out (calculated using formulas in Appendix IV of the Salmon standard v.1.3), or: Maximum amount of EPA and DHA from direct marine sources (65)(calculated according to Appendix IV of the Salmon standard v.1.3)</p> <p>Requirement: FFDRs &lt; 2.52 or (EPA + DHA) &lt; 30 g/kg feed</p> <p>Applicability: All</p>	Compliant															
4.3.1	<p>Indicator: Timeframe for all fishmeal and fish oil used in feed to come from fisheries(66) certified under a scheme that is an ISAL member (67) and has guidelines that specifically promote responsible environmental management of small pelagic fisheries</p> <p>Requirement: Not required</p> <p>Applicability: N/A</p>	Compliant															
4.3.2	<p>Indicator: Prior to achieving 4.3.1, the FishSource score (65, 68) for the fishery(ies) from which all marine raw material in feed is derived</p> <p>Requirement: All individual scores ≥ 6, and biomass score ≥ 6</p> <p>Applicability: All</p>	Compliant															
4.3.3	<p>Indicator: Prior to achieving 4.3.1, demonstration of third-party verified chain of custody and traceability for the batches of fishmeal and fish oil which are in compliance with 4.3.2</p> <p>Requirement: Yes</p> <p>Applicability: All</p>	Compliant															
4.3.4	<p>Indicator: Feed containing fishmeal and/or fish oil originating from by-products (69) or trimmings from IUU (70) catch or from fish species that are categorized as vulnerable, endangered or critically endangered, according to the IUCN Red List of Threatened Species(71), whole fish and fish meal from the same species and family as the species being farmed</p> <p>Requirement: None (72)</p> <p>Applicability: All. For species listed as "vulnerable" by IUCN, an exception is made if a regional population of the species has been assessed to be not vulnerable in a National Red List process that is managed explicitly in the same science-based way as IUCN. In cases where a National Red List doesn't exist or isn't managed in accordance with IUCN guidelines, an exception is allowed when an assessment is conducted using IUCN's methodology and demonstrates that the population is not vulnerable.</p>	Compliant															
4.3.5	<p>Indicator: Presence and evidence of a responsible sourcing policy for the feed manufacturer for marine ingredients that includes a commitment to continuous improvement of source fisheries (73)</p> <p>Requirement: Yes</p> <p>Applicability: All</p>	Compliant															
4.4.1	<p>Indicator: Presence and evidence of a responsible sourcing policy for the feed manufacturer for feed ingredients that comply with recognized crop moratoriums(74) and local laws(77)</p> <p>Requirement: Yes</p> <p>Applicability: All</p>	Compliant															
4.4.2	<p>Indicator: Percentage of soya or soya-derived ingredients in the feed that are certified by the Roundtable for Responsible Soy (RTRS) or equivalent (78)</p> <p>Requirement: 100%</p> <p>Applicability: All</p>	Compliant															
4.4.3	<p>Indicator: Evidence of disclosure to the buyer(79) of the salmon of inclusion of transgenic(80) plant raw material, or raw materials derived from transgenic plants, in the feed</p> <p>Requirement: Yes, for each individual raw material containing &gt; 1% transgenic content (81)</p> <p>Applicability: All</p>	Compliant															
4.5.1	<p>Indicator: Presence and evidence of a functioning policy for proper and responsible(83) treatment of non-biological waste from production (e.g., disposal and recycling)</p> <p>Requirement: Yes</p> <p>Applicability: All</p>	Compliant															
4.5.2	<p>Indicator: Evidence that non-biological waste (including net pens) from grow-out site is either disposed of properly or recycled</p> <p>Requirement: Yes</p> <p>Applicability: All</p>	Compliant															
4.6.1	<p>Indicator: Presence of an energy use assessment verifying the energy consumption on the farm and representing the whole life cycle at sea, as outlined in Appendix V of the Salmon standard v.1.3</p> <p>Requirement: Yes, measured in kilojoule/t fish produced/production cycle</p> <p>Applicability: All</p>	Compliant															

4.6.2	<p>Indicator: Records of greenhouse gas (GHG)(85) emissions(86) on farm and evidence of an annual GHG assessment, as outlined in Appendix V of the Salmon standard v.1.3</p> <p>Requirement: Yes</p> <p>Applicability: All</p>	Compliant																
4.6.3	<p>Indicator: Documentation of GHG emissions of the feed(87) used during the previous production cycle, as outlined in Appendix V of the Salmon standard v.1.3</p> <p>Requirement: Yes</p> <p>Applicability: All</p>	Compliant																
4.7.1	<p>Indicator: For farms that use copper-treated nets(90), evidence that nets are not cleaned(91) or treated in situ in the marine environment</p> <p>Requirement: Yes</p> <p>Applicability: All farms. Closed production systems that do not use nets and do not use antifoulants shall be considered exempt from standards under Criterion 4.7.</p>	Compliant																
4.7.2	<p>Indicator: For any farm that cleans nets at on-land sites, evidence that net-cleaning sites have effluent treatment (92)</p> <p>Requirement: Yes</p> <p>Applicability: All farms. Closed production systems that do not use nets and do not use antifoulants shall be considered exempt from standards under Criterion 4.7.</p>	Compliant																
4.7.3	<p>Indicator: For farms that use copper nets or copper-treated nets, evidence of testing for copper level in the sediment outside of the AZE, following methodology in Appendix I of the Salmon standard v.1.3</p> <p>Requirement: Yes</p> <p>Applicability: All farms. Closed production systems that do not use nets and do not use antifoulants shall be considered exempt from standards under Criterion 4.7.</p>	Compliant																
4.7.4	<p>Indicator: Evidence that copper levels(93) are &lt; 34 mg Cu/kg dry sediment weight, or, in instances where the Cu in the sediment exceeds 34 mg Cu/kg dry sediment weight, demonstration that the Cu concentration falls within the range of background concentrations as measured at three reference sites in the water body</p> <p>Requirement: Yes</p> <p>Applicability: All farms. Closed production systems that do not use nets and do not use antifoulants shall be considered exempt from standards under Criterion 4.7.</p>	Compliant																
4.7.5	<p>Indicator: Evidence that the type of biocides used in net antifouling are approved according to legislation in the European Union, or the United States, or Australia</p> <p>Requirement: Yes</p> <p>Applicability: All farms. Closed production systems that do not use nets and do not use antifoulants shall be considered exempt from standards under Criterion 4.7.</p>	Compliant																
5.1.1	<p>Indicator: Evidence of a fish health management plan for the identification and monitoring of fish diseases, parasites and environmental conditions relevant for good fish health, including implementing corrective action when required</p> <p>Requirement: Yes</p> <p>Applicability: All</p>	Compliant																
5.1.2	<p>Indicator: Site visits by a designated veterinarian(95) at least four times a year, and by a fish health manager(96) at least once a month</p> <p>Requirement: Yes</p> <p>Applicability: All</p>	Compliant																
5.1.3	<p>Indicator: Percentage of dead fish removed and disposed of in a responsible manner</p> <p>Requirement: 100% (97)</p> <p>Applicability: All</p>	Compliant																
5.1.4	<p>Indicator: Percentage of mortalities that are recorded, classified and receive a post-mortem analysis</p> <p>Requirement: 100% (98)</p> <p>Applicability: All</p>	Compliant																
5.1.5	<p>Indicator: Maximum viral disease-related mortality(99) on farm during the most recent production cycle</p> <p>Requirement: ≤ 10%</p> <p>Applicability: All</p>	Compliant																
5.1.6	<p>Indicator: Maximum unexplained mortality rate from each of the previous two production cycles, for farms with total mortality &gt; 6%</p> <p>Requirement: ≤ 40% of total mortalities</p> <p>Applicability: All farms with &gt; 6% total mortality in the most recent complete production cycle</p>	Compliant																

5.1.7	Indicator: A farm-specific mortalities reduction program that includes defined annual targets for reductions in mortalities and reductions in unexplained mortalities  Requirement: Yes  Applicability: All	Compliant																
5.2.1	Indicator: On-farm documentation that includes, at a minimum, detailed information on all chemicals(101) and therapeutants used during the most recent production cycle, the amounts used (including grams per ton of fish produced), the dates used, which group of fish were treated and against which diseases, proof of proper dosing, and all disease and pathogens detected on the site  Requirement: Yes  Applicability: All	Compliant																
5.2.2	Indicator: Allowance for use of therapeutic treatments that include antibiotics or chemicals that are banned(102) in any of the primary salmon producing or importing countries (103)  Requirement: None  Applicability: All	Compliant																
5.2.3	Indicator: Percentage of medication events that are prescribed by a veterinarian  Requirement: 100%  Applicability: All	Compliant																
5.2.4	Indicator: Compliance with all withholding periods after treatments  Requirement: Yes  Applicability: All	Compliant																
5.2.5	Indicator: The farm shall publicly report (via Appendix of the Salmon standard v.1.3) the: 1. Weighted Number of Medicinal Treatments (see Appendix VII) for each production cycle 2. The parasiticide load for each agent over the production cycle 3. The benthic parasiticide residue levels  Requirement: Yes  Applicability: All	Compliant																
5.2.6	Indicator: The Weighted Number of Medicinal Treatments shall be at or below the country Entry Level (see Appendix VII of the Salmon standard v.1.3)  Requirement: Yes  Applicability: All	Compliant																
5.2.7	Indicator: The farm shall reduce the Weighted Number of Medicinal Treatments, after adhering indicator 5.2.6, with 25% per 2 years until the WNMT is at or below the Global Level (see Appendix VII of the Salmon standard v.1.3)  Requirement: Yes  Applicability: All	Compliant																
5.2.8	Indicator: The farm shall implement Integrated Pest Management (IPM) according to the guidance in Appendix VII of the Salmon standard v.1.3  Requirement: Yes  Applicability: All	Compliant																
5.2.9	Indicator: The farm shall public present (e.g. via company website) the IPM-measures that the company applies which need to be approved by a authorised veterinarian  Requirement: Yes  Applicability: All	Compliant																
5.2.10	Indicator: The farm shall monitor parasiticide residue levels annually in the benthic sediment directly outside the AZE  Requirement: Yes  Applicability: All	Compliant																
5.2.11	Indicator: Allowance for prophylactic use of antimicrobial treatments(104)  Requirement: None  Applicability: All	Compliant																
5.2.12	Indicator: Allowance for use of antibiotics listed as critically important for human medicine by the World Health Organization (WHO)(105)  Requirement: None(106)  Applicability: All	Compliant																
5.2.13	Indicator: Number of treatments(107) of antibiotics over the most recent production cycle  Requirement: ≤ 3  Applicability: All	Compliant																

5.2.14	<p>Indicator: If more than one antibiotic treatment is used in the most recent production cycle, demonstration that the antibiotic load(108) is at least 15% less than the average of the two previous production cycles</p> <p>Requirement: Yes (109)</p> <p>Applicability: All</p>	Compliant															
5.2.15	<p>Indicator: Presence of documents demonstrating that the farm has provided buyers(110) of its salmon a list of all therapeutants used in production</p> <p>Requirement: Yes</p> <p>Applicability: All</p>	Compliant															
5.3.1	<p>Indicator: Bio-assay analysis to determine resistance when two applications of a treatment have not produced the expected effect</p> <p>Requirement: Yes</p> <p>Applicability: All</p>	Compliant															
5.3.2	<p>Indicator: When bio-assay tests determine resistance is forming, use of an alternative, permitted treatment, or an immediate harvest of all fish on the site</p> <p>Requirement: Yes</p> <p>Applicability: All</p>	Compliant															
5.3.3	<p>Indicator: Specific rotation, providing that the farm has &gt;1 effective medicinal treatment product available, every third treatment must belong to a different family of drugs</p> <p>Requirement: Yes</p> <p>Applicability: All</p>	Compliant															
5.4.1	<p>Indicator: Evidence that all salmon on the site are a single-year class(112)</p> <p>Requirement: 100% (113)</p> <p>Applicability: All farms. Exception is allowed for: 1) farm sites that have closed, contained production units where there is complete separation of water between units and no sharing of filtration systems or other systems that could spread disease, or, 2) farm sites that have 95% water recirculation, a pre-entry disease screening protocol, dedicated quarantine capability and biosecurity measures for waste to ensure there is no discharge of live biological material to the natural environment (e.g. UV or other effective treatment of effluent).</p>	Compliant															
5.4.2	<p>Indicator: Evidence that if the farm suspects an unidentified transmissible agent, or if the farm experiences unexplained increased mortality(114), the farm has: 1. Reported the issue to the ABM and to the appropriate regulatory authority 2. Increased monitoring and surveillance(115) on the farm and within the ABM 3. Promptly(116) made findings publicly available</p> <p>Requirement: Yes</p> <p>Applicability: All</p>	Compliant															
5.4.3	<p>Indicator: Evidence of compliance(117) with the OIE Aquatic Animal Health Code(118)</p> <p>Requirement: Yes</p> <p>Applicability: All</p>	Compliant															
5.4.4	<p>Indicator: If an OIE-notifiable disease(119) is confirmed on the farm, evidence that: 1. the farm, at a minimum, immediately culled the pen(s) in which the disease was detected 2. the farm immediately notified the other farms in the ABM (120) 3. the farm and the ABM enhanced monitoring and conducted rigorous testing for the disease 4. the farm promptly(121) made findings publicly available</p> <p>Requirement: Yes</p> <p>Applicability: All</p>	Compliant															
6.1.1	<p>Indicator: Evidence that workers have access to trade unions (if they exist) and union representative(s) chosen by themselves without managerial interference</p> <p>Requirement: Yes</p> <p>Applicability: All</p>	Compliant															
6.1.2	<p>Indicator: Evidence that workers are free to form organizations, including unions, to advocate for and protect their rights</p> <p>Requirement: Yes</p> <p>Applicability: All</p>	Compliant															
6.1.3	<p>Indicator: Evidence that workers are free and able to bargain collectively for their rights</p> <p>Requirement: Yes</p> <p>Applicability: All</p>	Compliant															

	Indicator: Number of incidences of child(123) labour(124) Requirement: None																		
6.2.1	Applicability: All except: Child: Any person under 15 years of age. A higher age would apply if the minimum age law of an area stipulates a higher age for work or mandatory schooling. Minimum age may be 14 if the country allows it under the developing country exceptions in ILO convention 138	Compliant																	
6.2.2	Indicator: Percentage of young workers(125) that are protected(126) Requirement: 100%	Compliant																	
6.3.1	Indicator: Number of incidences of forced(129), bonded(130) or compulsory labour Requirement: None	Compliant																	
6.4.1	Applicability: All Indicator: Evidence of comprehensive(132) and proactive anti-discrimination policies, procedures and practices Requirement: Yes	Compliant																	
6.4.2	Applicability: All Indicator: Number of incidences of discrimination Requirement: None	Compliant																	
6.5.1	Indicator: Percentage of workers trained in health and safety practices, procedures(133) and policies on a yearly basis Requirement: 100%	Compliant																	
6.5.2	Indicator: Evidence that workers use Personal Protective Equipment (PPE) effectively Requirement: Yes	Compliant																	
6.5.3	Applicability: All Indicator: Presence of a health and safety risk assessment and evidence of preventive actions taken Requirement: Yes	Compliant																	
6.5.4	Applicability: All Indicator: Evidence that all health- and safety-related accidents and violations are recorded and corrective actions are taken when necessary Requirement: Yes	Compliant																	
6.5.5	Indicator: Evidence of employer responsibility and/or proof of insurance (accident or injury) for 100% of worker costs in a job-related accident or injury when not covered under national law Requirement: Yes	Compliant																	
6.5.6	Applicability: All Indicator: Evidence that all diving operations are conducted by divers who are certified Requirement: Yes	Compliant																	
6.6.1	Indicator: The percentage of workers whose basic wage(134) (before overtime and bonuses) is below the minimum wage(135) Requirement: 0 (None) Applicability: All	Compliant																	
6.6.2	Indicator: Evidence that the employer is working toward the payment of basic needs wage(136) Requirement: Yes Applicability: All	Compliant																	
6.6.3	Indicator: Evidence of transparency in wage-setting and rendering(137) Requirement: Yes Applicability: All	Compliant																	
6.7.1	Indicator: Percentage of workers who have contracts(139) Requirement: 100%	Compliant																	
6.7.2	Applicability: All Indicator: Evidence of a policy to ensure social compliance of its suppliers and contractors Requirement: Yes	Compliant																	
6.8.1	Indicator: Evidence of worker access to effective, fair and confidential grievance procedures Requirement: Yes Applicability: All	Compliant																	

6.8.2	Indicator: Percentage of grievances handled that are addressed(140) within a 90-day timeframe Requirement: 100% Applicability: All	Compliant																
6.9.1	Indicator: Incidences of excessive or abusive disciplinary actions Requirement: None Applicability: All	Compliant																
6.9.2	Indicator: Evidence of a functioning disciplinary action policy whose aim is to improve the worker (141) Requirement: Yes Applicability: All	Compliant																
6.10.1	Indicator: Incidences, violations or abuse of working hours(143) and overtime laws Requirement: None Applicability: All	Compliant																
6.10.2	Indicator: Overtime is limited, voluntary(144), paid at a premium rate and restricted to exceptional circumstances Requirement: Yes Applicability: All	Compliant																
6.11.1	Indicator: Evidence that the company regularly performs training of staff in fish husbandry, general farm and fish escape management and health and safety procedures Requirement: Yes Applicability: All	Compliant																
6.12.1	Indicator: Demonstration of company-level(146) policies in line with the standards under 6.1 to 6.11 above Requirement: Yes Applicability: All	Compliant																
7.1.1	Indicator: Evidence of regular and meaningful(147) consultation and engagement with community representatives and organizations Requirement: Yes Applicability: All	Compliant																
7.1.2	Indicator: Presence and evidence of an effective(148) policy and mechanism for the presentation, treatment and resolution of complaints by community stakeholders and organizations Requirement: Yes Applicability: All	Compliant																
7.1.3	Indicator: Evidence that the farm has posted visible notice(149) at the farm during times of therapeutic treatments and has, as part of consultation with communities under 7.1.1, communicated about potential health risks from treatments Requirement: Yes Applicability: All	Compliant																
7.2.1	Indicator: Evidence that indigenous groups were consulted as required by relevant local and/or national laws and regulations Requirement: Yes Applicability: All farms that operate in indigenous territories or in proximity to indigenous or aboriginal people	Compliant																
7.2.2	Indicator: Evidence that the farm has undertaken proactive consultation with indigenous communities Requirement: Yes (150) Applicability: All farms that operate in indigenous territories or in proximity to indigenous or aboriginal people	Compliant																
7.2.3	Indicator: Evidence of a protocol agreement, or an active process(151) to establish a protocol agreement, with indigenous communities Requirement: Yes Applicability: All farms that operate in indigenous territories or in proximity to indigenous or aboriginal people	Compliant																
7.3.1	Indicator: Changes undertaken restricting access to vital community resources(152) without community approval Requirement: None Applicability: All	Compliant																
7.3.2	Indicator: Evidence of assessments of company's impact on access to resources Requirement: Yes Applicability: All	Compliant																
8.1	Indicator: Compliance with local and national regulations on water use and discharge, specifically providing permits related to water quality Requirement: Yes Applicability: All Smolt Producers	Compliant																

8.2	<p>Indicator: Compliance with labour laws and regulations</p> <p>Requirement: Yes</p> <p>Applicability: All Smolt Producers</p>		Compliant															
8.3	<p>Indicator: Evidence of an assessment of the farm's potential impacts on biodiversity and nearby ecosystems that contains the same components as the assessment for grow-out facilities under 2.4.1</p> <p>Requirement: Yes</p> <p>Applicability: All Smolt Producers</p>		Compliant															
8.4	<p>Indicator: Maximum total amount of phosphorus released into the environment per metric ton (mt) of fish produced over a 12-month period (see Appendix VII of the Salmon standard v.1.3)</p> <p>Requirement: 4 kg/mt of fish produced over a 12-month period</p> <p>Applicability: All Smolt Producers</p>		Compliant															
8.5	<p>Indicator: If a non-native species is being produced, the species shall have been widely commercially produced in the area prior to the publication(154) of the ASC Salmon Standards</p> <p>Requirement: Yes (155)</p> <p>Applicability: All Smolt Producers. Exceptions shall be made for production systems that use 100 percent sterile fish or systems that demonstrate separation from the wild by effective physical barriers that are in place and well-maintained to ensure no escapes of reared specimens or biological material that might survive and subsequently reproduce.</p>		Compliant															
8.6	<p>Indicator: Maximum number of escapees(156) in the most recent production cycle</p> <p>Requirement: 300(157) fish</p> <p>Applicability: All Smolt producers. A rare exception to this standard may be made for an escape event that is clearly documented as being outside of the farm's control. Only one such exceptional episode is allowed in a 10-year period for the purposes of this standard. The 10-year period starts at the beginning of the production cycle for which the farm is applying for certification. The farmer must demonstrate that there was no reasonable way to predict the events that caused the episode. Extreme weather (e.g., 100-year storms) or accidents caused by farms located near high-traffic waterways are not intended to be covered under this exception.</p>		Compliant															
8.7	<p>Indicator: Accuracy(158) of the counting technology or counting method used for calculating the number of fish</p> <p>Requirement: ≥98%</p> <p>Applicability: All Smolt Producers</p>		Compliant															
8.8	<p>Indicator: Evidence of a functioning policy for proper and responsible treatment of non-biological waste from production (e.g., disposal and recycling)</p> <p>Requirement: Yes</p> <p>Applicability: All Smolt Producers</p>		Compliant															
8.9	<p>Indicator: Presence of an energy-use assessment verifying the energy consumption at the smolt production facility (see Appendix V subsection 1 of the Salmon standard v.1.3 for guidance and required components of the records and assessment)</p> <p>Requirement: Yes, measured in kilojoule/mt fish/production cycle</p> <p>Applicability: All Smolt Producers</p>		Compliant															
8.10	<p>Indicator: Records of greenhouse gas (GHG(159)) emissions(160) at the smolt production facility and evidence of an annual GHG assessment (See Appendix V of the Salmon standard v.1.3)</p> <p>Requirement: Yes</p> <p>Applicability: All Smolt Producers</p>		Compliant															
8.11	<p>Indicator: Evidence of a fish health management plan, approved by the designated veterinarian, for the identification and monitoring of fish diseases and parasites</p> <p>Requirement: Yes</p> <p>Applicability: All Smolt Producers</p>		Compliant															
8.12	<p>Indicator: Percentage of fish that are vaccinated for selected diseases that are known to present a significant risk in the region and for which an effective vaccine exists(161)</p> <p>Requirement: 100%</p> <p>Applicability: All Smolt Producers</p>		Compliant															
8.13	<p>Indicator: Percentage of smolt groups(162) tested for select diseases of regional concern prior to entering the grow-out phase on farm(163)</p> <p>Requirement: 100%</p> <p>Applicability: All Smolt Producers</p>		Compliant															

8.14	<p>Indicator: Detailed information, provided by the designated veterinarian, of all chemicals and therapeutants used during the smolt production cycle, the amounts used (including grams per ton of fish produced), the dates used, which group of fish were treated and against which diseases, proof of proper dosing and all disease and pathogens detected on the site</p> <p>Requirement: Yes</p> <p>Applicability: All Smolt Producers</p>	Compliant																
8.15	<p>Indicator: Allowance for use of therapeutic treatments that include antibiotics or chemicals that are banned[164] in any of the primary salmon producing or importing countries[165]</p> <p>Requirement: Yes</p> <p>Applicability: All Smolt Producers</p>	Compliant																
8.16	<p>Indicator: Number of treatments of antibiotics over the most recent production cycle</p> <p>Requirement: ≤ 3</p> <p>Applicability: All Smolt Producers</p>	Compliant																
8.17	<p>Indicator: Allowance for use of antibiotics listed as critically important for human medicine by the WHO (166)</p> <p>Requirement: None (167)</p> <p>Applicability: All Smolt Producers</p>	Compliant																
8.18	<p>Indicator: Evidence of compliance[168] with the OIE Aquatic Animal Health Code[169]</p> <p>Requirement: Yes</p> <p>Applicability: All Smolt Producers</p>	Compliant																
8.19	<p>Indicator: Evidence of company-level policies and procedures in line with the labour standards under 6.1 to 6.11</p> <p>Requirement: Yes</p> <p>Applicability: All Smolt Producers</p>	Compliant																
8.20	<p>Indicator: Evidence of regular consultation and engagement with community representatives and organizations</p> <p>Requirement: Yes</p> <p>Applicability: All Smolt Producers</p>	Compliant																
8.21	<p>Indicator: Evidence of a policy for the presentation, treatment and resolution of complaints by community stakeholders and organizations</p> <p>Requirement: Yes</p> <p>Applicability: All Smolt Producers</p>	Compliant																
8.22	<p>Indicator: Where relevant, evidence that indigenous groups were consulted as required by relevant local and/or national laws and regulations</p> <p>Requirement: Yes</p> <p>Applicability: All Smolt Producers</p>	Compliant																
8.23	<p>Indicator: Where relevant, evidence that the farm has undertaken proactive consultation with indigenous communities</p> <p>Requirement: Yes</p> <p>Applicability: All Smolt Producers</p>	Compliant																
8.25	<p>Indicator: Allowance for stocking smolts produced in cage culture</p> <p>Requirement: Permitted only if supplying farms are 1) operated in a region where indigenous salmonids are present of the same species being cultivated and 2) the farm is certified to the ASC freshwater trout standard</p> <p>Applicability: open (net-pen) production of smolt</p>	Compliant																
8.26	<p>Indicator: Water quality monitoring matrix completed and submitted to ASC [see Appendix VII of the Salmon standard v.1.3]</p> <p>Requirement: Yes[171]</p> <p>Applicability: open (net-pen) production of smolt</p>	Compliant																
8.27	<p>Indicator: Minimum oxygen saturation in the outflow (methodology in Appendix VII of the Salmon standard v.1.3)</p> <p>Requirement: 60%(172, 173)</p> <p>Applicability: All Smolt Producers Using Semi-Closed or Closed Production Systems</p>	Compliant																
8.28	<p>Indicator: Macro-invertebrate surveys downstream from the farm's effluent discharge demonstrate benthic health that is similar or better than surveys upstream from the discharge (methodology in Appendix VII of the Salmon standard v.1.3)</p> <p>Requirement: Yes</p> <p>Applicability: All Smolt Producers Using Semi-Closed or Closed Production Systems</p>	Compliant																
8.29	<p>Indicator: Evidence of implementation of biosolids (sludge) Best Management Practices (BMPs) (Appendix VII of the Salmon standard v.1.3)</p> <p>Requirement: Yes</p> <p>Applicability: All Smolt Producers Using Semi-Closed or Closed Production Systems</p>	Compliant																



Where the requirement is "None", please use 0 (zero) if requirement is met

Corresponds to ASC Salmon standard version 1.3

[illegible]

[illegible]

[illegible]

[illegible]

7.3.1
Social
Changes undertaken restricting access to vital community resources without community approval
None

Summary of Standard Non Conformities (NC)

Standard: Seriola and Cobia  
Version: 1.1

NC Type	NC Totals
Major	0
Minor	0
Total	0

Note: Unique NC codes can be entered in column A - All other data fields in this summary worksheet populate automatically

NC Code (CAB)	Indicator Number	Indicator Text	Audit Evidence	Overall Indicator evaluation	Description, justification and conclusion for the evaluation decision	Date of NC detection	Deadline for NC close-out	Actual date of close-out	NC Status	VR submitted	Status of submitted VR	VR used	Q&A submitted/used	Root cause analysis	NC correction	NC Corrective action	Auditor evaluation	Extension justification	New deadline for NC close-out	Notes
---------------	------------------	----------------	----------------	------------------------------	---	----------------------	---------------------------	--------------------------	-----------	--------------	------------------------	---------	--------------------	---------------------	---------------	----------------------	--------------------	-------------------------	-------------------------------	-------

[illegible]

[illegible]







[illegible]



[illegible]

Metric table    Where the requirement is "None", please use 0 (zero)  
If requirement is met

Corresponds to ASC Seriola & Cobia standard version 1.1

Indicator No	5.2.4	4.2.1a	4.2.1b	4.2.1c	4.2.1d	4.2.1e	4.2.1f	4.2.1g	4.2.1h	4.2.1i	4.2.1j	4.2.1k	4.2.1l	4.2.1m
Impact Category	Chemicals/therapeutants	Feed	Feed	Feed	Feed	Feed	Feed	Feed	Feed	Feed	Feed	Feed	Feed	Feed
Indicator Text	Allowable farm level anti-parasiticide treatment, not including freshwater, formaldehyde or hydrogen peroxide	(a) Fishmeal Forage Fish Dependency Ratio (FFDRm) for Seriola (calculated using formulae in Appendix 1). Kampachi (S. rivollana, S. dumerili).	(a) Fishmeal Forage Fish Dependency Ratio (FFDRm) for Seriola (calculated using formulae in Appendix 1). Hamachi (S. quinqueriata).	(a) Fishmeal Forage Fish Dependency Ratio (FFDRm) for Seriola (calculated using formulae in Appendix 1). Hamachi (S. quinqueriata). (3 Years)	(a) Fishmeal Forage Fish Dependency Ratio (FFDRm) for Seriola (calculated using formulae in Appendix 1). Hamachi (S. quinqueriata). (6 Years)	Fish Oil Forage Fish Dependency Ratio (FFDRo) for Seriola (calculated using formulae in Appendix 1). Kampachi (S. rivollana, S. dumerili).	Fish Oil Forage Fish Dependency Ratio (FFDRo) for Seriola (calculated using formulae in Appendix 1). Hamachi (S. quinqueriata).NOW	Fish Oil Forage Fish Dependency Ratio (FFDRo) for Seriola (calculated using formulae in Appendix 1). Hamachi (S. quinqueriata). (3 Years)	Fish Oil Forage Fish Dependency Ratio (FFDRo) for Seriola (calculated using formulae in Appendix 1). Hamachi (S. quinqueriata). (6 Years)	(b) FFDRm Cobia (calculated using formulae in Appendix 1)	(b) FFDRm Cobia (calculated using formulae in Appendix 1) (3 Years)	(b) FFDRm Cobia (calculated using formulae in Appendix 1) (6 Years)	(b) FFDRo Cobia (calculated using formulae in Appendix 1)	(b) FFDRo Cobia (calculated using formulae in Appendix 1) (3 Years)
Requirement/ Site ID														
50000630				✓ 3.36				✓ 0						

4.2.1n	4.3.2	4.3.3	4.3.4	4.4.3	2.3.2	3.2.1	5.3.1	5.3.2	2.4.1	2.4.2	2.4.5a	2.4.5b	2.4.5c
Feed	Feed	Feed	Feed	Feed	other	Parasites	Water quality	Water quality	Wildlife interactions	Wildlife interactions	Wildlife interactions	Wildlife interactions	Wildlife interactions
(b) FFDro Cobia (calculated using formulae in Appendix 1) (6 Years)	Prior to achieving 4.3.1, the fishmeal or fish oil used in feed must have a fishSource score of 6.0 or higher, plus (and) an 8 in the biomass category.	Feed containing fishmeal and/or fish oil originating from by-products or trimmings from fish species which are categorized as vulnerable, endangered or critically endangered, according to the IUCN Red List of Threatened Species	Feed ingredients which come from other fish from the same genus	Percent of non-marine ingredients from sources certified by an ISEAL Member's certification scheme that addresses environmental and social sustainability. For soy and palm oil within 5 years from the date of the publication of the ASC Seriola and Cobia Standard.	Allowance for the farm to be sited in a legally designated protected area	Culture of transgenic fish	Weekly average percent dissolved oxygen (DO) saturation on farm, calculated in the following methodology.	Maximum percentage of weekly samples from 5.3.1 that fall under 70%.	Acoustic deterrent devices allowed	Number of mortalities of endangered or red- listed animals in the farm lease area and adjacent areas due to farm operations or personnel or associates.	Maximum number of lethal incidents for Birds on farm over the prior two years.	Maximum number of lethal incidents for Sharks on farm over the prior two years.	Maximum number of lethal incidents for Mammals on farm over the prior two years.
						✓ 0							

3.1.1	6.1.2	6.6.1	6.4.1	6.7.3	6.9.1	6.10.2	6.1.1	6.2.1	6.2.2	6.3.2	6.3.4	6.6.2	6.7.1	6.8.1
Wildlife interactions	Social	Social	Social	Social	Social	Social	Social	Social	Social	Social	Social	Social	Social	Social
Culture of non-native species	Percentage of young workers that are protected	Percentage of employees with access to trade unions, worker organizations, and/or the ability to self-organize as well as the ability to bargain collectively or access the representative(s) chosen by workers without management interference.	Percentage of employees trained in health and safety practices, procedures and policies relevant to the job (for operations above 5 employees)	Evidence that allegations of harassment are recorded and addressed with corrective actions	Percentage of workers who have contracts or other written employment agreements.	Percentage of grievances handled that are addressed within a 90-day timeframe.	Number of incidences of child labour	Number of Incidents where employers withhold any part of employee salary, property, or benefits upon termination of employment.	Number of incidents where employees are required to surrender original identity documents upon commencing employment (except as required for processing of legal documentation).	Number of confirmed incidences of discrimination.	Number of incidents where employer dismisses an employee on the basis of marital status or pregnancy or deny employee legal rights to pregnancy or maternity leave.	Incidences of members of unions or worker organizations being discriminated against.	Incidences of excessive or abusive disciplinary Actions.	Incidences, violations or abuse of working hours or overtime laws.
			✓ 100		✓ 100		✓ 0	✓ 0	✓ 0	✓ 0	✓ 0		✓ 0	✓ 0



6.5.1	6.5.2	7.3.1	7.3.2	7.2.1
Social	Social	Social	Social	Social
Percentage of workers whose basic wage (before overtime and bonuses) is below the minimum wage	The percentage of workers whose basic wage (before overtime and bonuses) is below the basic needs wage 5 years after adoption of the standard.	Changes undertaken restricting access to vital community resources without community approval	Assessments of company's impact on access to resources	Local groups consulted during project design and operation
✓0	✓0	✓0	✓1	

Summary of Standard Non Conformities (NC)

Standard:	Seniola and Cobia
Version:	1.1

Note: Unique NC codes can be entered in column A - All other data fields in this summary worksheet populate automatically

NC Code (CAB)	Indicator Number	Indicator Text	Audit Evidence	Indicator evaluation	Description, justification and conclusion for the evaluation decision	Date of NC detection	Deadline for NC close-out	Actual date of close-out	NC Status	VR submitted	Status of submitted VR	VR used	Q&A submitted/used	Root cause analysis	NC correction	NC Corrective action	Auditor evaluation	Extension justification	How deadline for NC close-out	Notes
	3.2.1	Indicator: Culture of transgenic fish by the farm  Requirement: None  Applicability: All	"Report on the history of fingerlings" (dated July 13, 2021) from the Kagoshima Bountiful Sea Creation Association include the statement "These fingerlings are not genetically modified". However, the report and other documents received from "Yamazaki Gilan and Arimoto Kindai did not clearly state that the fingerlings were not genetically modified."	Major	As there was no clear evidence of the actual presence or absence of genetic modification for all fingerlings subject to ASC, the NC status is upgraded to major.	21/07/2021	20/10/2021		Closed					As for yellowtail stock, no genetically modified varieties have been produced and therefore are not distributed to aquaculture farms.  For this reason, it was not common for Certificate of origin for yellowtail seedlings to state that they were not genetically modified.	We obtained a seed certificate from the supplier stating "not genetically modified."	From all fingerlings suppliers, evidence was obtained that the fingerlings supplied to the farms were not genetically modified. In addition, a system has been established to confirm whether the fingerlings purchased in the future are genetically modified or not. Major NC could be closed.	From all fingerlings suppliers, evidence was obtained that the fingerlings supplied to the farms were not genetically modified. In addition, a system has been established to confirm whether the fingerlings purchased in the future are genetically modified or not. Major NC could be closed.			
	4.3.1	Indicator: Timeframe for at least 90% fishmeal or fish oil used in feed to come from fisheries. (17) certified under an IDEAL member's accredited certification whose primary goal is to promote ecological sustainability  Requirement: Within 5 years following the date of the publication of the SCAD standards  Applicability: All	More than 90% of fishmeal and fish oil had been confirmed by a certificate from a raw material manufacturer that they were certified as an IDEAL associate member MainTrust. However, there was a lack of confirmation regarding the feed to be fed to the fingerlings. Documents showing the fishery's determination to feed fish meal and fish oil from fishery certified according to the criteria of IDEAL members were not yet prepared.	Minor	Because of the small amount of feed given to the fingerlings, there should be no problem in having more than 90% of the total feed come from certified fisheries of IDEAL members, but since this had not been confirmed, it is a minor non-conformity	21/07/2021	20/10/2021		Open					There are no feeds for fingerlings manufactured that meet the ASC standards. This is because the original operation was based on the understanding that feed for fingerlings weighing more than about 200g should be compliant with ASC standards. Since there was no recognition of the need to feed ASC-compliant food to fingerlings after they were introduced to the farm, even if they were small in size, only feed for fingerlings larger than 200g was prepared.	For the fish produced to date, feeding records after introduction into the cages showed that the amount of food administered that did not meet ASC standards ranged from 0.2 to 4% of the total, and that more than 90% of the feed administered before landing was marine trust-certified fishmeal only.	For the most recent production cycle, feed data after cage stocking, including the time of fingerlings, was reviewed and confirmed to have met the standard.	In order to confirm the status of continuous compliance with the standard, the deadline for addressing minor nonconformities will be extended to one year.	20/07/2022		
	6.4.2	Indicator: Safety equipment (Personal Protective Equipment, PPE) provided and maintained and in use  Requirement: Yes  Applicability: All	Union employees are provided with safety equipment; Helmets, gloves, safety shoes, warm clothes (for work in the refrigerator), kapaoshoots (for work at market), work clothes (for processing plant). Gas replacement for life jackets is not yet due. AEDs are rented and the vendor comes to replace them. Each producer purchases their own safety equipment. The durability of helmets has not been verified. This is a matter of observation.  The group training could not be conducted last year due to the corona pandemic, but the plan is to conduct safety training in FY2021.  During the on-site audit, there were several people on board who were not wearing life jackets. Although the cooperative has made the rules for wearing life jackets known, they have not been thoroughly implemented.	Minor	It is necessary to continue to more actively inform the public about the rules for wearing life jackets in order to ensure that they are enforced. As the rules have been established and this is an operational issue, this is a minor non-conformity.	21/07/2021	20/10/2021		Open					Although it is compulsory to wear a life vest, people do not have the habit of wearing it and are not aware of it because there have been no serious accidents caused by falling into the water.	An article reminding people to wear life vests was published in the October 2021 issue of the Fishing Cooperative Newsletter. The article was distributed to all members of the cooperative. This reminded everyone of the need to wear life vests.	It was confirmed that the producers were again reminded to wear life vests.	To check whether the rules for wearing life vests have been thoroughly implemented by producers, the deadline for closing minor non-conformities will be extended to one year.	20/07/2022		

[illegible]

[illegible]







[illegible]





[illegible]

Metric table

Where the requirement is "None", please use 0 (zero) if requirement is met

Corresponds to ASC Seabass, Seabream & Meagre standard version 1.1

[illegible]

[illegible]

[illegible]

[illegible]

Summary of Standard Non Conformities (NC)

Standard: Seriola and Cobia  
Version: 1.1

NC Type	NC Totals
Major	0
Minor	0
Total	0

Note: Unique NC codes can be entered in column A - All other data fields in this summary worksheet populate automatically

NC Code (CAB)	Indicator Number	Indicator Text	Audit Evidence	Indicator evaluation	Description, justification and conclusion for the evaluation decision	Date of NC detection	Deadline for NC close-out	Actual date of close-out	NC Status	VR submitted	Status of submitted VR	VR used	Q&A submitted/used	Root cause analysis	NC correction	NC Corrective action	Auditor evaluation	Extension justification	New deadline for NC close-out	Notes
---------------	------------------	----------------	----------------	----------------------	---	----------------------	---------------------------	--------------------------	-----------	--------------	------------------------	---------	--------------------	---------------------	---------------	----------------------	--------------------	-------------------------	-------------------------------	-------

[illegible]



[illegible]

[illegible]

[illegible]

[illegible]

[illegible]

[illegible]

[illegible]

Metric table

Where the requirement is "None", please use 0 (zero) if requirement is met

Corresponds to ASC Freshwater Trout standard version 1.2

Indicator No	2.2.1	2.3.1	2.4.1	2.6.1	3.1.1	3.2.1	3.2.2	3.3.4
Impact Category	Other	Wildlife Interaction	Wildlife Interaction	Wildlife Interaction	Water quality	Water quality	Water quality	Water quality
Indicator Text	For new farms installed on land after February 2013 (or for significant expansions), minimum buffer zone between the farm and an adjacent water body in which there is no farm infrastructure that might impede wildlife's access to the water, except for inflow and outflow systems	New introductions of exotic species from the date of the publication of the ASC Freshwater Trout Standard, unless the hatchery/fingerling facility is a closed production system	Allowance for the culture of transgenic trout, including the offspring of genetically engineered trout	Intentional use of lethal predator control	Maximum amount of water that a farm can abstract from a natural flowing water body (such as a river or stream)	Maximum total amount of phosphorus released into the environment per metric ton (mt) of fish produced over a 12-month period (see methodology in Appendix II-A)	Minimum oxygen saturation in the outflow, measured monthly (see methodology in Appendix II-B)	Maximum baseline total phosphorus concentration of the water body (see Appendix II-H)
Requirement/ Site ID								
S0000630								



3.3.5	3.3.7a	3.3.7b	3.3.8	4.1.7	5.2.2	5.3.1	5.3.2a	5.3.2b
Water quality	Water quality	Water quality	Water quality	Other	Feed	Feed	Feed	Feed
Minimum percent oxygen saturation of water 50 centimetres above bottom sediment (at all oxygen monitoring locations described in Appendix II-G)	Maximum allowed increase in total phosphorus concentration in lake from baseline - <b>for water bodies with a surface area of less than 1,000 km2.</b>	Maximum allowed increase in total phosphorus concentration in lake from baseline - <b>for water bodies with a surface area of 1,000 km2 or greater</b>	Maximum total amount of phosphorus released into the environment per metric ton (t) of fish produced over a 12-month period (see Appendix II-A)	Minimum frequency of inspection of the farm by a designated veterinarian who specializes in aquatic animal health. The inspection must review the farm health plan.	Prior to 100% achievement of 5.2.1, the Fishsource score required for the fisheries from which marine raw material in feed is derived (excluding trimming and by-products)	Fishmeal Forage Fish Dependency Ratio (FFDRm) for grow-out (calculated using formulas in Appendix III, subsection 1)	Option A: Compliance with the following requirement: Fish Oil Forage Fish Dependency Ratio (FFDRo) for grow-out (calculated using formulas in Appendix III, subsection 1) c	option B: Compliance with the following requirement: Maximum level of EPA/DHA content from marine sources as a percentage of fatty acids in the feed (excluding EPA/DHA from trimmings and by-products)

[illegible]

6.5.1	6.6.1	6.7.1	6.8.1
Social	Social	Social	Social
The percentage of employees who are paid a basic needs wage.	Incidences of employees denied freedom to associate, the ability to bargain collectively or denied access to representatives, or representative organizations, chosen by workers	Incidences of abusive disciplinary actions	Violations or abuse of working hours and overtime laws and agreements

Summary of Standard Non Conformities (NC)

Standard: Seriola and Cobia  
Version: 1.1

NC Type	NC Totals
Major	0
Minor	0
Total	0

Note: Unique NC codes can be entered in column A - All other data fields in this summary worksheet populate automatically

NC Code	Indicator Number	Indicator Text	Audit Evidence	Indicator evaluation	Description, justification and conclusion for the evaluation decision	Date of NC detection	Deadline for NC close-out	Actual date of close-out	NC Status	VR submitted	Status of submitted VR	VR used	Q&A submitted/used	Root cause analysis	NC correction	NC Corrective action	Auditor evaluation	Extension justification	New deadline for NC close-out	Notes
---------	------------------	----------------	----------------	----------------------	---	----------------------	---------------------------	--------------------------	-----------	--------------	------------------------	---------	--------------------	---------------------	---------------	----------------------	--------------------	-------------------------	-------------------------------	-------

[illegible]

[illegible]

[illegible]

[illegible]



Metric table

Where the requirement is "None", please use 0 (zero) if requirement is met

Corresponds to ASC Bivalve standard version 1.1

[illegible]

Summary of Standard Non Conformities (NC)

Standard: Seriola and Cobia  
Version: 1.1

NC Type	NC Totals
Major	0
Minor	0
Total	0

Note: Unique NC codes can be entered in column A - All other data fields in this summary worksheet populate automatically

NC Code (CAB)	Indicator Number	Indicator Text	Audit Evidence	Indicator evaluation	Description, justification and conclusion for the evaluation decision	Date of NC detection	Deadline for NC close-out	Actual date of close-out	NC Status	VR submitted	Status of submitted VR	VR used	Q&A submitted/used	Root cause analysis	NC correction	NC Corrective action	Auditor evaluation	Extension justification	New deadline for NC close-out	Notes
---------------	------------------	----------------	----------------	----------------------	---	----------------------	---------------------------	--------------------------	-----------	--------------	------------------------	---------	--------------------	---------------------	---------------	----------------------	--------------------	-------------------------	-------------------------------	-------

[illegible]

[illegible]

[illegible]

[illegible]

Metric table

Where the requirement is "None", please use 0 (zero) if requirement is met

Corresponds to ASC Abalone standard version 1.1

[illegible]

Summary of Standard Non Conformities (NC)

Standard: Seriola and Cobia  
Version: 1.1

NC Type	NC Totals
Major	0
Minor	0
Total	0

Note: Unique NC codes can be entered in column A - All other data fields in this summary worksheet populate automatically

NC Code (CAB)	Indicator Number	Indicator Text	Audit Evidence	Indicator evaluation	Description, justification and conclusion for the evaluation decision	Date of NC detection	Deadline for NC close-out	Actual date of close-out	NC Status	VR submitted	Status of submitted VR	VR used	Q&A submitted/used	Root cause analysis	NC correction	NC Corrective action	Auditor evaluation	Extension justification	New deadline for NC close-out	Notes
---------------	------------------	----------------	----------------	----------------------	---	----------------------	---------------------------	--------------------------	-----------	--------------	------------------------	---------	--------------------	---------------------	---------------	----------------------	--------------------	-------------------------	-------------------------------	-------



[illegible]

[illegible]

[illegible]

[illegible]

[illegible]

Metric table

Where the requirement is "None", please use 0 (zero)  
if requirement is met

Corresponds to ASC Tilapia standard version 1.2

Indicator No	6.2.1	6.2.2	6.2.3	6.2.6	6.2.7	3.1.1	5.1.1	5.1.2
Impact Category	Chemicals/therapeutants	Chemicals/therapeutants	Chemicals/therapeutants	Chemicals/therapeutants	Chemicals/therapeutants	Feed	Feed	feed
Indicator Text	Allowance for the use of chemicals and therapeutants for disease and pest control that are banned in the importing or producing country	Allowance for the prophylactic use of antibiotics, prior to any evidence of a disease problem	Minimum hold time required before any water in which fish have been fed with feed containing methyl or ethyl testosterone can be released (in Hours)	Allowance for the use of antibiotics critical for human medicine, as categorized by the World Health Organization	Number of treatments of antibiotics over the most recent production cycle	The total amount of phosphorus added to the culture system per metric ton of fish produced per year. Use equations from Appendix III. (in Kg)	Feed Fish Equivalence Ratio (FFER). See Appendix IV for feed calculations.	Allowance for the use of fishmeal and fish oil in tilapia feed containing products from fisheries that are listed on the IUCN's Red List or the species list maintained by the Convention on the International Trade of Endangered Species of Wild Fauna and Flora
Requirement/ Site ID								
50000630								

2  
3

2  
3



50  
51  
52



2  
3



1  
0  
-1



25  
24  
23



0.6  
0.5  
0.4

2  
3

5.1.4a Feed	5.1.4b Feed	6.1.1 Mortality/survival/escapes	2.6.1 other	4.1.4 other	4.1.5 other	2.3.1 Water quality	2.4.1 Water quality	2.4.3 Water quality
Prior to achievement of 5.1.3, the average FishSource score characterizing the fishery(ies) from which the fishmeal or fish oil is derived. See Appendix V for explanation of FishSource scoring. (With no individual score)	Prior to achievement of 5.1.3, the average FishSource score characterizing the fishery(ies) from which the fishmeal or fish oil is derived. See Appendix V for explanation of FishSource scoring. (in stock assessment category)	Percent recovery of fish stocked in production stages after they have attained a size of 100 grams	Hectares of allowable wetland conversion since 1999 (in Ha)	In cage culture systems, the minimum distance between the bottom of the cage and the bottom of the receiving water where the cage is placed (in m)	The minimum percentage of males or sterile fish in a culture unit	The percent change in diurnal dissolved oxygen of receiving waters relative to dissolved oxygen at saturation for the water's specific salinity and temperature	Secchi disk visibility limit above which production is not certifiable (in Meters)	Total phosphorus concentration limit in receiving waters (in µg/L)



8  
9  
10



67  
68  
69



2  
3



5  
6  
7



97  
98  
99



63  
62  
61

12  
13  
14



22  
23  
24

[illegible]

✕  
✕  
✕

6  
7  
8

✕  
✕  
✕

22  
23  
24

✕  
✕  
✕

12  
13  
14

✕  
✕

2  
3

7.4.2 Social	7.4.3 Social	7.5.1 Social
Percentage of health- and safety- related accidents and violations recorded and mitigated through corrective actions	Employer responsibility and proof of insurance (accident/ injury for employee costs in a job-related accident or injury when not covered under national law	The percentage of employees who are paid fair and decent wages

Summary of Standard Non Conformities (NC)

Standard: Seriola and Cobia  
Version: 1.1

NC Type	NC Totals
Major	0
Minor	0
Total	0

Note: Unique NC codes can be entered in column A - All other data fields in this summary worksheet populate automatically

NC Code (CAB)	Indicator Number	Indicator Text	Audit Evidence	Indicator evaluation	Description, justification and conclusion for the evaluation decision	Date of NC detection	Deadline for NC close-out	Actual date of close-out	NC Status	VR submitted	Status of submitted VR	VR used	Q&A submitted/used	Root cause analysis	NC correction	NC Corrective action	Auditor evaluation	Extension justification	New deadline for NC close-out	Notes
---------------	------------------	----------------	----------------	----------------------	---	----------------------	---------------------------	--------------------------	-----------	--------------	------------------------	---------	--------------------	---------------------	---------------	----------------------	--------------------	-------------------------	-------------------------------	-------

[illegible]

[illegible]





[illegible]





[illegible]

[illegible]

Metric table

Where the requirement is "None", please use 0 (zero)  
if requirement is met

Corresponds to ASC Shrimp standard version 1.1

Indicator No	5.3.1	5.3.2	5.3.5	5.3.6	7.2.1a	7.2.1b
Impact Category	Chemicals/therapeutants	Chemicals/therapeutants	Chemicals/therapeutants	Chemicals/therapeutants	Feed	Feed
Indicator Text	Allowance for use of antibiotic and medicated feed on ASC-labelled products (farm can be certified but specific product receiving medicated feed will not be authorized to carry ASC label).	Allowance for the use of antibiotics categorized as critically important by the World Health Organization (WHO), even if authorized by the pertinent national authorities.	Allowance for treating water with pesticides banned or restricted by the Rotterdam Convention on Prior Informed Consent (PIC), the Stockholm Convention on Persistent Organic Pollutants (POPs) or classed as "extremely hazardous" or "highly hazardous" (classes 1a and 1b) by the World Health Organization (WHO).	Allowance for discharge of any hazardous chemicals without previous neutralization	Timeframe for 100% (mass balance) fishmeal and fish oil used in feed to come from fisheries certified by a full ISEAL member that has guidelines specifically promoting ecological sustainability of forage fisheries (In Years)	FishSource score, for the fishery(ies) from which a minimum of 80% of the fishmeal and fish oil by volume is derived (See Appendix IV, subsection 3 for explanation of FishSource scoring) a. for Fishsource Criteria 4 (spawning biomass assessment) (or compliance with alternative interim proposal 7.1.1c)
Requirement/ Site ID						
50000630						

7.2.1c Feed	7.2.2 Feed	7.4.1a Feed	7.4.1b Feed	5.1.3a Mortality/survival/escapes	5.1.3b Mortality/survival/escapes	5.1.3c Mortality/survival/escapes	6.2.2a other
FishSource score , for the fishery(ies) from which a minimum of 80% of the fishmeal and fish oil by volume is derived (See Appendix IV, subsection 3 for explanation of FishSource scoring) b. for Fishsource Criteria 1, 2, 3 and 5 (or compliance with alternative interim proposal 7.1.1c)	Percentage of non-marine ingredients from sources certified by an ISEAL member's certification scheme that addresses environmental and social sustainability	Feed Fish Equivalence Ratio (FFER) L. vannamei	Feed Fish Equivalence Ratio (FFER) P. monodon	Annual average farm survival rate (SR): 1) Unfed and non-permanently aerated pond systems	Annual average farm survival rate (SR): 2) Fed but non-permanently aerated pond systems	Annual average farm survival rate (SR): 3) Fed and permanently aerated pond systems.	Percent of total post larvae from closed loop hatchery for L. vannamei, P. indicus, P. stylirostris (i.e., farm-raised broodstock)

6.2.2b other	2.5.3a Water quality	2.5.3b Water quality	7.5.1a Water quality	7.5.1b Water quality	7.5.2a Water quality	7.5.2b Water quality	7.5.4 Water quality	7.5.5 Water quality
Percent of total post larvae from closed loop hatchery for P. monodon ( must be increased over time, and reach 100% within six years after the publication of the standard.) (i.e., farm-raised broodstock)	Water-specific conductance in freshwater wells used by the farm or located on adjacent properties. (in µS/cm)	Chloride concentration in freshwater wells used by the farm or located on adjacent properties. (in mg/l)	Nitrogen effluent load per ton of shrimp produced for L. vannamei over a 12-month period.	Nitrogen effluent load per ton of shrimp produced for P. monodon over a 12-month period.	Phosphorous effluent load per ton of shrimp produced for L. vannamei. over a 12-month period	Phosphorous effluent load per ton of shrimp produced for P. Monodon over a 12-month period	Treatment of effluent water from permanently aerated ponds. Evidence that all discharged water goes through a treatment system, and concentration of settleable solids in effluent water (in ml/l)	Percentage change in diurnal dissolved oxygen (DO) relative to DO at saturation in receiving water body for the water's specific salinity and temperature.



[illegible]

Summary of Standard Non Conformities (NC)

Standard: Seriola and Cobia  
Version: 1.1

NC Type	NC Totals
Major	0
Minor	0
Total	0

Note: Unique NC codes can be entered in column A - All other data fields in this summary worksheet populate automatically

NC Code (CAB)	Indicator Number	Indicator Text	Audit Evidence	Indicator evaluation	Description, justification and conclusion for the evaluation decision	Date of NC detection	Deadline for NC close-out	Actual date of close-out	NC Status	VR submitted	Status of submitted VR	VR used	Q&A submitted/used	Root cause analysis	NC correction	NC Corrective action	Auditor evaluation	Extension justification	New deadline for NC close-out	Notes
---------------	------------------	----------------	----------------	----------------------	---	----------------------	---------------------------	--------------------------	-----------	--------------	------------------------	---------	--------------------	---------------------	---------------	----------------------	--------------------	-------------------------	-------------------------------	-------

[illegible]

[illegible]

[illegible]

[illegible]

[illegible]

[illegible]



[illegible]

Metric table

Where the requirement is "None", please use 0 (zero) if requirement is met

Corresponds to ASC Pangasius standard version 1.2

[illegible]

[illegible]

7.8.3b Social	7.10.2 Social	7.10.3 Social	7.11.2 Social	7.11.3 Social	7.11.5 Social	7.14.3a Social	7.14.3b Social	7.14.3c Social
Minimum time in days/month off for all workers	Maximum length of probation period stated in the contract for workers, other than farm managers and workers with an university degree (in	Maximum length of probation period stated in the contract for farm managers and workers with an university degree	percentage of issues raised by workers which are registered, tracked and responded to by the employer	Percentage of complaints that are resolved within one month after being received	Timeframe in years for the contracting of suppliers and service providers that ensure suitable health and safety conditions for their workers	Percentage of conflicts resolved within <b>6 months</b> of the date of being filed	Percentage of conflicts resolved <b>within 1</b> year of the date of being filed	Percentage of conflicts resolved <b>within 2</b> years of the date of being filed

Summary of Standard Non Conformities (NC)

Standard: Seriola and Cobia  
Version: 1.1

NC Type	NC Totals
Major	0
Minor	0
Total	0

Note: Unique NC codes can be entered in column A - All other data fields in this summary worksheet populate automatically

NC Code (CAB)	Indicator Number	Indicator Text	Audit Evidence	Indicator evaluation	Description, justification and conclusion for the evaluation decision	Date of NC detection	Deadline for NC close-out	Actual date of close-out	NC Status	VR submitted	Status of submitted VR	VR used	Q&A submitted/used	Root cause analysis	NC correction	NC Corrective action	Auditor evaluation	Extension justification	New deadline for NC close-out	Notes
---------------	------------------	----------------	----------------	----------------------	---	----------------------	---------------------------	--------------------------	-----------	--------------	------------------------	---------	--------------------	---------------------	---------------	----------------------	--------------------	-------------------------	-------------------------------	-------



[illegible]

[illegible]



Metric table      Where the requirement is "None", please use 0 (zero) if requirement is met

Corresponds to ASC Flatfish standard version 1.0

[illegible]

[illegible]

[illegible]

Summary of Standard Non Conformities (NC)

Standard: Seriola and Cobia  
Version: 1.1

NC Type	NC Totals
Major	0
Minor	0
Total	0

Note: Unique NC codes can be entered in column A - All other data fields in this summary worksheet populate automatically

NC Code (CAB)	Indicator Number	Indicator Text	Audit Evidence	Indicator evaluation	Description, justification and conclusion for the evaluation decision	Date of NC detection	Deadline for NC close-out	Actual date of close-out	NC Status	VR submitted	Status of submitted VR	VR used	Q&A submitted/used	Root cause analysis	NC correction	NC Corrective action	Auditor evaluation	Extension justification	New deadline for NC close-out	Notes
---------------	------------------	----------------	----------------	----------------------	---	----------------------	---------------------------	--------------------------	-----------	--------------	------------------------	---------	--------------------	---------------------	---------------	----------------------	--------------------	-------------------------	-------------------------------	-------

														Project Name		Project ID		Project Manager		Project Status		Project Phase		Project Budget		Project Timeline	
ID	Name	Description	Status	Priority	Category	Sub-category	Owner	Assignee	Due Date	Created At	Updated At	Last Modified By	Comments	Attachments	Tags	Progress	Completion Date	Start Date	End Date	Estimated Cost	Actual Cost	Remaining Budget	Timeline				
1	Project A	Project A Description	In Progress	High	Development	Frontend	John Doe	Jane Smith	2024-01-15	2024-01-15	2024-01-15	John Doe	Initial setup and planning.		Project A	50%	2024-02-01	2024-01-15	2024-02-01	\$100,000	\$50,000	\$50,000	2024-01-15				
2	Project B	Project B Description	On Hold	Medium	Development	Backend	Jane Smith	John Doe	2024-01-16	2024-01-16	2024-01-16	Jane Smith	Database schema design.		Project B	10%	2024-02-05	2024-01-16	2024-02-05	\$150,000	\$15,000	\$135,000	2024-01-16				
3	Project C	Project C Description	Not Started	Low	Marketing	Campaign	John Doe	Jane Smith	2024-01-17	2024-01-17	2024-01-17	John Doe	Market research and analysis.		Project C	0%	2024-02-10	2024-01-17	2024-02-10	\$80,000	\$0	\$80,000	2024-01-17				
4	Project D	Project D Description	In Progress	Medium	Marketing	Content	Jane Smith	John Doe	2024-01-18	2024-01-18	2024-01-18	Jane Smith	Content creation and review.		Project D	75%	2024-02-15	2024-01-18	2024-02-15	\$120,000	\$90,000	\$30,000	2024-01-18				
5	Project E	Project E Description	On Hold	High	Development	Frontend	John Doe	Jane Smith	2024-01-19	2024-01-19	2024-01-19	John Doe	Complex UI development.		Project E	20%	2024-02-20	2024-01-19	2024-02-20	\$200,000	\$40,000	\$160,000	2024-01-19				
6	Project F	Project F Description	Not Started	Low	Marketing	Campaign	Jane Smith	John Doe	2024-01-20	2024-01-20	2024-01-20	Jane Smith	Market research and analysis.		Project F	0%	2024-02-25	2024-01-20	2024-02-25	\$90,000	\$0	\$90,000	2024-01-20				
7	Project G	Project G Description	In Progress	Medium	Development	Backend	John Doe	Jane Smith	2024-01-21	2024-01-21	2024-01-21	John Doe	API development and testing.		Project G	60%	2024-02-28	2024-01-21	2024-02-28	\$180,000	\$108,000	\$72,000	2024-01-21				
8	Project H	Project H Description	On Hold	High	Marketing	Campaign	Jane Smith	John Doe	2024-01-22	2024-01-22	2024-01-22	Jane Smith	Complex campaign strategy.		Project H	15%	2024-03-05	2024-01-22	2024-03-05	\$110,000	\$16,500	\$93,500	2024-01-22				
9	Project I	Project I Description	Not Started	Low	Development	Frontend	John Doe	Jane Smith	2024-01-23	2024-01-23	2024-01-23	John Doe	Initial setup and planning.		Project I	0%	2024-03-10	2024-01-23	2024-03-10	\$70,000	\$0	\$70,000	2024-01-23				
10	Project J	Project J Description	In Progress	Medium	Marketing	Campaign	Jane Smith	John Doe	2024-01-24	2024-01-24	2024-01-24	Jane Smith	Content creation and review.		Project J	40%	2024-03-15	2024-01-24	2024-03-15	\$130,000	\$52,000	\$78,000	2024-01-24				
11	Project K	Project K Description	On Hold	High	Development	Backend	John Doe	Jane Smith	2024-01-25	2024-01-25	2024-01-25	John Doe	Complex API development.		Project K	10%	2024-03-20	2024-01-25	2024-03-20	\$190,000	\$19,000	\$171,000	2024-01-25				
12	Project L	Project L Description	Not Started	Low	Marketing	Campaign	Jane Smith	John Doe	2024-01-26	2024-01-26	2024-01-26	Jane Smith	Market research and analysis.		Project L	0%	2024-03-25	2024-01-26	2024-03-25	\$85,000	\$0	\$85,000	2024-01-26				
13	Project M	Project M Description	In Progress	Medium	Development	Frontend	John Doe	Jane Smith	2024-01-27	2024-01-27	2024-01-27	John Doe	UI development and testing.		Project M	55%	2024-03-30	2024-01-27	2024-03-30	\$160,000	\$88,000	\$72,000	2024-01-27				
14	Project N	Project N Description	On Hold	High	Marketing	Campaign	Jane Smith	John Doe	2024-01-28	2024-01-28	2024-01-28	Jane Smith	Complex campaign strategy.		Project N	15%	2024-04-05	2024-01-28	2024-04-05	\$105,000	\$15,750	\$89,250	2024-01-28				
15	Project O	Project O Description	Not Started	Low	Development	Backend	John Doe	Jane Smith	2024-01-29	2024-01-29	2024-01-29	John Doe	Initial setup and planning.		Project O	0%	2024-04-10	2024-01-29	2024-04-10	\$75,000	\$0	\$75,000	2024-01-29				
16	Project P	Project P Description	In Progress	Medium	Marketing	Campaign	Jane Smith	John Doe	2024-01-30	2024-01-30	2024-01-30	Jane Smith	Content creation and review.		Project P	45%	2024-04-15	2024-01-30	2024-04-15	\$140,000	\$63,000	\$77,000	2024-01-30				
17	Project Q	Project Q Description	On Hold	High	Development	Frontend	John Doe	Jane Smith	2024-01-31	2024-01-31	2024-01-31	John Doe	Complex UI development.		Project Q	10%	2024-04-20	2024-01-31	2024-04-20	\$210,000	\$21,000	\$189,000	2024-01-31				
18	Project R	Project R Description	Not Started	Low	Marketing	Campaign	Jane Smith	John Doe	2024-02-01	2024-02-01	2024-02-01	Jane Smith	Market research and analysis.		Project R	0%	2024-04-25	2024-02-01	2024-04-25	\$95,000	\$0	\$95,000	2024-02-01				
19	Project S	Project S Description	In Progress	Medium	Development	Backend	John Doe	Jane Smith	2024-02-02	2024-02-02	2024-02-02	John Doe	API development and testing.		Project S	65%	2024-04-30	2024-02-02	2024-04-30	\$170,000	\$110,500	\$59,500	2024-02-02				
20	Project T	Project T Description	On Hold	High	Marketing	Campaign	Jane Smith	John Doe	2024-02-03	2024-02-03	2024-02-03	Jane Smith	Complex campaign strategy.		Project T	15%	2024-05-05	2024-02-03	2024-05-05	\$115,000	\$17,250	\$97,750	2024-02-03				
21	Project U	Project U Description	Not Started	Low	Development	Frontend	John Doe	Jane Smith	2024-02-04	2024-02-04	2024-02-04	John Doe	Initial setup and planning.		Project U	0%	2024-05-10	2024-02-04	2024-05-10	\$80,000	\$0	\$80,000	2024-02-04				
22	Project V	Project V Description	In Progress	Medium	Marketing	Campaign	Jane Smith	John Doe	2024-02-05	2024-02-05	2024-02-05	Jane Smith	Content creation and review.		Project V	40%	2024-05-15	2024-02-05	2024-05-15	\$150,000	\$60,000	\$90,000	2024-02-05				
23	Project W	Project W Description	On Hold	High	Development	Backend	John Doe	Jane Smith	2024-02-06	2024-02-06	2024-02-06	John Doe	Complex API development.		Project W	10%	2024-05-20	2024-02-06	2024-05-20	\$220,000	\$22,000	\$198,000	2024-02-06				
24	Project X	Project X Description	Not Started	Low	Marketing	Campaign	Jane Smith	John Doe	2024-02-07	2024-02-07	2024-02-07	Jane Smith	Market research and analysis.		Project X	0%	2024-05-25	2024-02-07	2024-05-25	\$100,000	\$0	\$100,000	2024-02-07				
25	Project Y	Project Y Description	In Progress	Medium	Development	Frontend	John Doe	Jane Smith	2024-02-08	2024-02-08	2024-02-08	John Doe	UI development and testing.		Project Y	55%	2024-05-30	2024-02-08	2024-05-30	\$180,000	\$99,000	\$81,000	2024-02-08				
26	Project Z	Project Z Description	On Hold	High	Marketing	Campaign	Jane Smith	John Doe	2024-02-09	2024-02-09	2024-02-09	Jane Smith	Complex campaign strategy.		Project Z	15%	2024-06-05	2024-02-09	2024-06-05	\$125,000	\$18,750	\$106,250	2024-02-09				
27	Project AA	Project AA Description	Not Started	Low	Development	Backend	John Doe	Jane Smith	2024-02-10	2024-02-10	2024-02-10	John Doe	Initial setup and planning.		Project AA	0%	2024-06-10	2024-02-10	2024-06-10	\$90,000	\$0	\$90,000	2024-02-10				
28	Project AB	Project AB Description	In Progress	Medium	Marketing	Campaign	Jane Smith	John Doe	2024-02-11	2024-02-11	2024-02-11	Jane Smith	Content creation and review.		Project AB	45%	2024-06-15	2024-02-11	2024-06-15	\$160,000	\$72,000	\$88,000	2024-02-11				
29	Project AC	Project AC Description	On Hold	High	Development	Frontend	John Doe	Jane Smith	2024-02-12	2024-02-12	2024-02-12	John Doe	Complex UI development.		Project AC	10%	2024-06-20	2024-02-12	2024-06-20	\$230,000	\$23,000	\$207,000	2024-02-12				
30	Project AD	Project AD Description	Not Started	Low	Marketing	Campaign	Jane Smith	John Doe	2024-02-13	2024-02-13	2024-02-13	Jane Smith	Market research and analysis.		Project AD	0%	2024-06-25	2024-02-13	2024-06-25	\$105,000	\$0	\$105,000	2024-02-13				
31	Project AE	Project AE Description	In Progress	Medium	Development	Backend	John Doe	Jane Smith	2024-02-14	2024-02-14	2024-02-14	John Doe	API development and testing.		Project AE	65%	2024-06-30	2024-02-14	2024-06-30	\$190,000	\$123,500	\$66,500	2024-02-14				
32	Project AF	Project AF Description	On Hold	High	Marketing	Campaign	Jane Smith	John Doe	2024-02-15	2024-02-15	2024-02-15	Jane Smith	Complex campaign strategy.		Project AF	15%	2024-07-05	2024-02-15	2024-07-05	\$135,000	\$20,250	\$114,750	2024-02-15				
33	Project AG	Project AG Description	Not Started	Low	Development	Frontend	John Doe	Jane Smith	2024-02-16	2024-02-16	2024-02-16	John Doe	Initial setup and planning.		Project AG	0%	2024-07-10	2024-02-16	2024-07-10	\$110,000	\$0	\$110,000	2024-02-16				
34	Project AH	Project AH Description	In Progress	Medium	Marketing	Campaign	Jane Smith	John Doe	2024-02-17	2024-02-17	2024-02-17	Jane Smith	Content creation and review.		Project AH	45%	2024-07-15	2024-02-17	2024-07-15	\$170,000	\$76,500	\$93,500	2024-02-17				
35	Project AI	Project AI Description	On Hold	High	Development	Backend	John Doe	Jane Smith	2024-02-18	2024-02-18	2024-02-18	John Doe	Complex API development.		Project AI	10%	2024-07-20	2024-02-18	2024-07-20	\$240,000	\$24,000	\$216,000	2024-02-18				
36	Project AJ	Project AJ Description	Not Started	Low	Marketing	Campaign	Jane Smith	John Doe	2024-02-19	2024-02-19	2024-02-19	Jane Smith	Market research and analysis.		Project AJ	0%	2024-07-25	2024-02-19	2024-07-25	\$115,000	\$0	\$115,000	2024-02-19				
37	Project AK	Project AK Description	In Progress	Medium	Development	Frontend	John Doe	Jane Smith	2024-02-20	2024-02-20	2024-02-20	John Doe	UI development and testing.		Project AK	55%	2024-07-30	2024-02-20	2024-07-30	\$200,000	\$110,000	\$90,000	2024-02-20				
38	Project AL	Project AL Description	On Hold	High	Marketing	Campaign	Jane Smith	John Doe	2024-02-21	2024-02-21	2024-02-21	Jane Smith	Complex campaign strategy.		Project AL	15%	2024-08-05	2024-02-21	2024-08-05	\$145,000	\$21,750	\$123,250	2024-02-21				
39	Project AM	Project AM Description	Not Started	Low	Development	Backend	John Doe	Jane Smith	2024-02-22	2024-02-22	2024-02-22	John Doe	Initial setup and planning.		Project AM	0%	2024-08-10	2024-02-22	2024-08-10	\$120,000	\$0	\$120,000	2024-02-22				
40	Project AN	Project AN Description	In Progress	Medium	Marketing	Campaign	Jane Smith	John Doe	2024-02-23	2024-02-23	2024-02-23	Jane Smith	Content creation and review.		Project AN	45%	2024-08-15	2024-02-23	2024-08-15	\$180,000	\$81,000	\$99,000	2024-02-23				
41	Project AO	Project AO Description	On Hold	High	Development	Frontend	John Doe	Jane Smith	2024-02-24	2024-02-24	2024-02-24	John Doe	Complex UI development.		Project AO	10%	2024-08-20	2024-02-24	2024-08-20	\$250,000	\$25,000	\$225,000	2024-02-24				
42	Project AP	Project AP Description	Not Started	Low	Marketing	Campaign	Jane Smith	John Doe	2024-02-25	2024-02-25	2024-02-25	Jane Smith	Market research and analysis.		Project AP	0%	2024-08-25	2024-02-25	2024-08-25	\$125,000	\$0	\$125,000	2024-02-25				
43	Project AQ	Project AQ Description	In Progress	Medium	Development	Backend	John Doe	Jane Smith	2024-02-26	2024-02-26	2024-02-26	John Doe	API development and testing.		Project AQ	65%	2024-08-30	2024-02-26	2024-08-30	\$210,000	\$136,500	\$73,500	2024-02-26				
44	Project AR	Project AR Description	On Hold	High	Marketing	Campaign	Jane Smith	John Doe	2024-02-27	2024-02-27	2024-02-27	Jane Smith	Complex campaign strategy.		Project AR	15%	2024-09-05	2024-02-27	2024-09-05	\$155,000	\$23,250	\$131,750	2024-02-27				
45	Project AS	Project AS Description	Not Started	Low	Development	Frontend	John Doe	Jane Smith	2024-02-28	2024-02-28	2024-02-28	John Doe	Initial setup and planning.		Project AS	0%	2024-09-10	2024-02-28	2024-09-10	\$130,000	\$0	\$130,000	2024-02-28				
46	Project AT	Project AT Description	In Progress	Medium	Marketing	Campaign	Jane Smith	John Doe	2024-02-29	2024-02-29	2024-02-29	Jane Smith	Content creation and review.		Project AT	45%	2024-09-15	2024-02-29	2024-09-15	\$190,000	\$85,500	\$104,500	2024-02-29				
47	Project AU	Project AU Description	On Hold	High	Development	Backend	John Doe	Jane Smith	2024-03-01	2024-03-01	2024-03-01	John Doe	Complex API development.		Project AU	10%	2024-09-20	2024-03-01	2024-09-20	\$260,000	\$26,000	\$234,000	2024-03-01				
48	Project AV	Project AV Description	Not Started	Low	Marketing	Campaign	Jane Smith	John Doe	2024-03-02	2024-03-02	2024-03-02	Jane Smith	Market research and analysis.		Project AV	0%	2024-09-25	2024-03-02	2024-09-25	\$135,000	\$0	\$135,000	2024-03-02				

2010	USA	310	14,500	78	12	4.5	80	10	75	0.72	0.85
2010	China	1,370	5,800	73	30	4.5	50	1	30	0.65	0.70
2010	India	1,100	1,500	67	50	19.5	30	1	15	0.60	0.65
2010	Germany	82	3,500	80	8	3.5	75	25	70	0.88	0.90
2010	Japan	127	5,500	83	7	2.5	92	15	85	0.92	0.95
2010	UK	61	2,500	81	9	5.5	88	20	78	0.90	0.92
2010	France	64	2,800	82	10	6.5	90	22	80	0.89	0.91
2010	Canada	34	1,500	82	7	6.5	82	18	72	0.87	0.89
2010	Australia	22	1,200	82	7	5.5	85	20	75	0.86	0.88
2010	South Korea	47	1,000	82	10	3.5	90	25	80	0.85	0.87
2010	Italy	61	1,800	82	11	6.5	88	20	78	0.84	0.86
2010	Spain	45	1,500	82	11	6.5	85	20	75	0.83	0.85
2010	Netherlands	16	500	82	8	4.5	90	25	80	0.91	0.93
2010	Sweden	9	400	82	7	4.5	88	25	82	0.90	0.92
2010	Denmark	5	250	82	7	4.5	85	25	80	0.89	0.91
2010	Norway	4	200	82	7	4.5	82	25	78	0.88	0.90
2010	Finland	5	200	82	7	4.5	80	25	75	0.87	0.89
2010	Switzerland	7	350	82	7	4.5	85	25	78	0.88	0.90
2010	Austria	8	300	82	7	4.5	82	25	75	0.87	0.89
2010	Belgium	10	350	82	10	5.5	88	20	78	0.86	0.88
2010	Luxembourg	0.5	30	82	7	4.5	85	25	78	0.88	0.90
2010	Portugal	11	200	82	11	6.5	85	20	75	0.84	0.86
2010	Greece	11	200	82	11	6.5	85	20	75	0.84	0.86
2010	Ireland	4	150	82	10	5.5	85	20	75	0.84	0.86
2010	Poland	38	1,000	77	15	12.5	75	10	40	0.75	0.78
2010	Czech Republic	10	250	77	15	12.5	75	10	40	0.75	0.78
2010	Slovakia	5	100	77	15	12.5	75	10	40	0.75	0.78
2010	Hungary	10	150	77	15	12.5	75	10	40	0.75	0.78
2010	Slovenia	2	100	77	15	12.5	75	10	40	0.75	0.78
2010	Croatia	4	100	77	15	12.5	75	10	40	0.75	0.78
2010	Serbia	7	100	77	15	12.5	75	10	40	0.75	0.78
2010	Bulgaria	7	100	77	15	12.5	75	10	40	0.75	0.78
2010	Romania	21	100	77	15	12.5	75	10	40	0.75	0.78
2010	Latvia	3	100	77	15	12.5	75	10	40	0.75	0.78
2010	Lithuania	3	100	77	15	12.5	75	10	40	0.75	0.78
2010	Estonia	1	100	77	15	12.5	75	10	40	0.75	0.78
2010	Ukraine	46	100	72	25	19.5	30	1	15	0.60	0.65
2010	Russia	142	1,500	72	25	19.5	30	1	15	0.60	0.65
2010	Belarus	9	100	72	25	19.5	30	1	15	0.60	0.65
2010	Georgia	4	100	72	25	19.5	30	1	15	0.60	0.65
2010	Armenia	3	100	72	25	19.5	30	1	15	0.60	0.65

[illegible]

Where the requirement is "None", please use 0 (zero) if requirement is met

[illegible]





[illegible]

6.7.1	6.8.2	6.2.1	6.3.1	6.4.2	6.6.1	6.9.1	6.10.1
Social	Social	Social	Social	Social	Social	Social	Social
Percentage of workers who have contracts	Percentage of grievances handled that are addressed within a 90-day timeframe	Number of incidences of child labour	Number of incidences of forced, bonded or compulsory labour	Number of incidences of discrimination	The percentage of workers whose basic wage(before overtime and bonuses) is below the minimum wage	Incidences of excessive or abusive disciplinary actions	Incidences, violations or abuse of working hours and overtime laws

Summary of Standard Non Conformities (NC)

Standard: Seriola and Cobia  
Version: 1.1

NC Type	NC Totals
Major	0
Minor	0
Total	0

Note: Unique NC codes can be entered in column A - All other data fields in this summary worksheet populate automatically

NC Code (CAB)	Indicator Number	Indicator Text	Audit Evidence	Indicator evaluation	Description, justification and conclusion for the evaluation decision	Date of NC detection	Deadline for NC close-out	Actual date of close-out	NC Status	VR submitted	Status of submitted VR	VR used	Q&A submitted/used	Root cause analysis	NC correction	NC Corrective action	Auditor evaluation	Extension justification	New deadline for NC close-out	Notes
---------------	------------------	----------------	----------------	----------------------	---	----------------------	---------------------------	--------------------------	-----------	--------------	------------------------	---------	--------------------	---------------------	---------------	----------------------	--------------------	-------------------------	-------------------------------	-------